

Knape & Vogt Slides

Maverick Hardware

KV Slides

Medium Duty Slides

KV8450 Soft-Close Full-Extension Drawer Slides

Features

- Side Mounting
- Telescoping Movement on Ball Bearings
- Load Rating: 100-pound class
- Height: 1-13/16"
- Clearance: 1/2" plus 1/32" minus 0" on each side
- Integrated soft-close mechanism
- 32mm hole pattern with direct access mounting
- Lever disconnect for easy drawer removal
- Non-handed design

<u>Part #</u>	<u>Size</u>	<u>Finish</u>
KV8450-12	12"	Anochrome
KV8450-14	14"	Anochrome
KV8450-16	16"	Anochrome
KV8450-18	18"	Anochrome
KV8450-20	20"	Anochrome
KV8450-22	22"	Anochrome
KV8450-24	24"	Anochrome
KV8450-26	26"	Anochrome
KV8450-28	28"	Anochrome
KV8450-16BK	16"	Black
KV8450-18BK	18"	Black
KV8450-20BK	20"	Black
KV8450-22BK	22"	Black



Medium Duty Slides

KV8430 Push to Open Drawer Slide

The New KV 8430 is a push in the right direction when it comes to cabinetry appearance and operation. The KV 8430 incorporates "push open" technology that holds a drawer in a stationary position until activated and then automatically pushes the door open. The KV 8430 is ideal for Euro-styled inset drawer fronts that are absent of pulls, knobs, and handles. The KV 8430 can also be used with overlay drawer fronts, provided at least 1/8" clearance space is allowed for activation of the push-to-open mechanism. Key applications include kitchen and commercial cabinets, mobile storage carts and other applications where clean aesthetics, positive closure and hands-free access are desired.

Features

- Full-Extension 100-Pound Class rated for medium duty applications.
- Push to open feature holds a drawer or tray in the closed position until activated by a slight push.
- 1/2" side clearance, no set-up change
- Non-handed design allows for easy, flexible installation in a cabinet shop.
- Traditional and 32mm hole patterns allow for easy, flexible installation on framed and frameless cabinetry.
- Three ball bearings per inch and polymer stop cushions aid with smooth quiet operation of the slide.
- Flexible mounting tabs self-adjust to side clearance to compensate for dimensional differences.
- Push-in lever disconnect allows for easy drawer removal.
- Ball retainer latch and ramps allow for easy drawer insertion.
- Finish: Anochrome

<u>Part #</u>	<u>Size</u>
KV8430-12	12"
KV8430-14	14"
KV8430-16	16"
KV8430-18	18"
KV8430-20	20"
KV8430-22	22"
KV8430-24	24"
KV8430-26	26"



KV Slides

Medium Duty Slides**KV8400 Full Extension Box or File Drawer Slide**

Specifically designed for use in desk drawers, credenzas and file cabinet drawers. Features telescoping movement on precision steel ball bearings. 32mm hole pattern with direct access mounting. Lever disconnect for easy drawer insertion. Easy drawer adjustment without removal. Flexible mounting tabs self adjust to side clearance, 3 bearings per inch. Smooth and quiet motion. Polymer stop cushions, non-handed. Available in Anochrome, black and white finishes. Sold per pair. **White also available as special order items in full box quantities.*

**Features**

- Side Mounting
- Telescopic Movement on Ball-bearings
- Load Rating: 100-pound class
- Height: 1-13/16"
- 1/2" plus 1/32" minus 0" clearance on each side
- 32mm hole pattern with direct access mounting
- Lever disconnect for easy drawer removal
- Non-handed design



Part #	Length	Color
KV8400-08	8"	Zinc
KV8400-10	10"	Zinc
KV8400-12	12"	Zinc
KV8400-24	24"	Zinc
KV8400-26	26"	Zinc
KV8400-28	28"	Zinc
KV8400-08BK	8"	Black
KV8400-10BK	10"	Black
KV8400-12BK	12"	Black
KV8400-14BK	14"	Black
KV8400-16BK	16"	Black
KV8400-18BK	18"	Black
KV8400-20BK	20"	Black
KV8400-22BK	22"	Black
KV8400-24BK	24"	Black
KV8400-26BK	26"	Black
KV8400-28BK	28"	Black

**KV8405 Precision Drawer Slides****100 lbs Capacity - 1" Over Travel**

Specifically designed for use in desk drawers, credenzas and file cabinet drawers. Features telescoping movement on precision steel ball bearings. 32mm hole pattern with direct access mounting. Lever disconnect for easy drawer insertion. Easy drawer adjustment without removal. Flexible mounting tabs self adjust to side clearance, 3 bearings per inch. Smooth and quiet motion. Polymer stop cushions, non-handed. Available in Anochrome, black and white finishes. Sold per pair. **White and black are also available as special order items in full box quantities.*

**Features**

- Side Mounting
- Telescopic Movement on Ball-bearings
- Load Rating: 100-pound class
- Height: 1-13/16"
- 1/2" plus 1/32" minus 0" clearance on each side
- 32mm hole pattern with direct access mounting
- Lever disconnect for easy drawer removal
- Non-handed design
- 1" Over travel
- Anochrome Finish



Part #	Length
KV8405-14	14"
KV8405-16	16"
KV8405-18	18"
KV8405-20	20"
KV8405-22	22"
KV8405-24	24"



Maverick Hardware

KV Slides

Section B-2: KV Slides

Medium Duty Slides

KV8400RV Medium Duty Self-Closing, Full-Extension Drawer Slide



Features

- Side Mounting
- Telescoping Movement on Ball Bearings
- Load Rating: 100-pound class
- Height: 1-13/16"
- Clearance: 1/2" plus 1/32" minus 0" on each side
- Anochrome Finish
- 32mm hole pattern with direct access mounting
- Self-closing feature
- Stronger spring

<u>Part #</u>	<u>Size</u>
KV8400RV-10	10"
KV8400RV-12	12"
KV8400RV-14	14"
KV8400RV-16	16"
KV8400RV-18	18"
KV8400RV-20	20"
KV8400RV-22	22"
KV8400RV-24	24"
KV8400RV-26	26"
KV8400RV-28	28"



Medium Duty Slides

KV8407 Full Extension Box or File Drawer Slide with Shelf Tabs



Features

- Side Mounting
- Telescoping Movement on Ball Bearings
- Load Rating: 100-pound class
- Height: 1-13/16"
- Clearance: 1/2" plus 1/32" minus 0" on each side
- Anochrome Finish
- 32mm hole pattern with direct access mounting
- Lever disconnect for easy drawer removal
- Shelf tabs



<u>Part #</u>	<u>Size</u>
KV8407-12	12"
KV8407-14	14"
KV8407-16	16"
KV8407-18	18"
KV8407-20	20"
KV8407-22	22"
KV8407-24	24"



KV Slides and Accessories

KV8414 Precision Drawer Slides with Hold Out
100 lbs Capacity - Full Extension

The KV8414 full extension drawer slide with hold out is specially designed for use in pull out work surfaces such as key boards trays, auxiliary writing surfaces, computer equipment and other under surface applications. Non handed design and 32mm hole pattern for easy installation. Slides are tested to meet or exceed ANSI performance standards as established by BIFMA, KCMA and BHMA. Sold per pair. Anochrome finish.

Features

- Clearance: 1/2" push 1/32" minus 0" each side
- Load rating: 100 Pound Class
- Progressive, telescopic movement on precision steel ball bearings
- 32mm hole pattern



<u>Part #</u>	<u>Length</u>
KV8414-12	12"
KV8414-14	14"
KV8414-16	16"
KV8414-18	18"
KV8414-20	20"
KV8414-22	22"
KV8414-24	24"

KV8404 Clip On Face Frame Bracket

Converts all KV 8400 series slides for face frame applications. Available in white, ebony black and zinc. No tools needed to attach bracket to slide. Sold per each.



<u>Part #</u>	<u>Packing</u>	<u>Finish</u>	
KV8404	20/ Bx	Zinc	
KV8404B	100/ Bx	Zinc	<i>Special Order</i>
KV8404BBL	400/ Bx	Zinc	

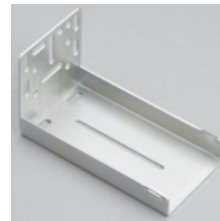
**Rear Mounting Bracket****KV8403****Features**

- Non-handed snap-on design
- 2 3/4" maximum adjustment

<u>Part #</u>	<u>Pack Configuration</u>
KV8403	20 Brackets per Carton
KV8403B	400 Brackets per Carton

**Rear Mounting Bracket****KV8401 Rear Mounting Bracket****Features**

- Non-handed snap-on design
- 2 3/4" maximum adjustment
- Extended rear flange
- Fits all KV 8400 series slides

**Side Mounting Bracket****KV1303****Features**

- Optional bracket used with pilaster strips mounted within the cabinet
- Allows slide to be adjusted vertically when changes in drawer height are necessary
- Clearance required: 1 5/8" per side.
- Load capacity: 35 lbs. per drawer/tray



Maverick Hardware

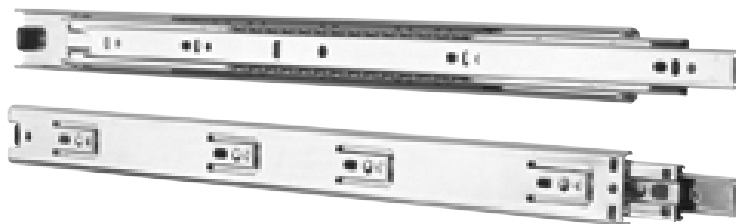
KV Slides

Medium Duty Slides

KV4100 Low Profile Drawer Slide

Features

- Side Mounting
- For drawer boxes or pedestal file drawers up to 24" wide
- Telescopic Movement on Ball-bearings
- Load Rating: 80-pound class
- Height: 1 27/64"
- Clearance: 1/2" plus 1/32" minus 0" on each side
- Zinc Finish
- Push button release
- Hold-in detent
- Sold per pair



<u>Part #</u>	<u>Size</u>
KV4100-10	10"
KV4100-12	12"
KV4100-14	14"
KV4100-16	16"
KV4100-18	18"
KV4100-20	20"
KV4100-22	22"

KV8505 Heavy Duty File Drawer Slides

150 lb Capacity - 1 1/2" Over Travel

Features

- Side Mounting
- For desk drawers, cradenzas, or file cabinet drawers
- Progressive Movement on Ball Bearings
- Load Rating: 150-pound class
- Height: 3-51/64" (including quick disconnect rail)
- Clearance: 1/2" plus 1/32" minus 0" each side
- Anchrome Finish
- 1-1/2" over travel
- 32mm hole pattern
- Non-handed quick disconnect drawer members
- Hold-in feature to prevent bounceback



<u>Zinc Part #</u>	<u>Length</u>
KV8505-12	12"
KV8505-14	14"
KV8505-16	16"
KV8505-18	18"
KV8505-20	20"
KV8505-22	22"
KV8505-24	24"
KV8505-26	26"
KV8505-28	28"
KV8505-30	30"

KV Heavy Duty Slides



KV8525 Heavy Duty File Drawer Slides
175 lb Capacity - 1 1/2" Over Travel

Features

- Side Mounting
- For desk drawers, cradenzas, or file cabinet drawers
- Progressive Movement on Ball Bearings
- Load Rating: 175-pound class
- Height: 3-51/64" (including quick disconnect rail)
- Clearance: 1/2" plus 1/32" minus 0" each side
- Anchrome Finish
- 1-1/2" over travel (36" maximum drawer width)
- 32mm hole pattern
- Non-handed quick disconnect drawer members
- Hold-in feature to prevent bounceback



<u>Part #</u>	<u>Length</u>
KV8525-16	16"
KV8525-18	18"
KV8525-20	20"

Maverick Hardware

KV Slides

Section B-2: KV Slides

KV8800 Heavy Duty Drawer Slide



200 lb Capacity - Full Extension

Ideal for commercial or industrial applications. 200 pound class rated for heavy duty applications. Closed position hold in detent. Non-handed design for quick and easy installation. Backed by the exclusive KV limited warranty. Sold per each. Packaged in bulk, 4 sets per box. Screws not included.

Features

- Hold-in feature to prevent bounceback
- 32mm hole pattern
- Clearance: 1/2" plus 1/32" minus 0" each side



<u>Part #</u>	<u>Length</u>
KV8800-12	12"
KV8800-14	14"
KV8800-16	16"
KV8800-18	18"
KV8800-20	20"
KV8800-22	22"
KV8800-24	24"
KV8800-26	26"
KV8800-28	28"

KV8805 Heavy Duty Over Travel Drawer Slide



200 lb Capacity - Full Extension

Ideal for large storage drawer applications up to 42" wide. 200 pound class rated for heavy duty applications. Both drawer slide and QD rail are non-handed, allowing for quick and easy installations. 1 inch over travel for easy access to drawer contents. Designed for use in drawers up to 42" wide. Backed by the exclusive KV limited lifetime warranty. Sold per pair. Zinc finish.

Features

- 1" Overtravel Drawer Slide
- Telescopic Movement on Ball Bearings
- Load Rating: 200 Pound Class
- 2 9/32" (2 25/32" with Quick Disconnect)
- Clearance: .89" plus .030" minus 0"
- Non-handed design for easy installation
- Ideal for large storage drawer applications up to 42" wide
- Quick disconnect rail for easy detachment



<u>Part #</u>	<u>Length</u>
KV8805-12	12"
KV8805-14	14"
KV8805-16	16"
KV8805-18	18"
KV8805-20	20"
KV8805-22	22"
KV8805-24	24"
KV8805-26	26"
KV8805-28	28"

KV Slides

KV8900 500 lb Slides**Extra Heavy Duty * Full Extension Drawer Slide**

Ideal for commercial and industrial applications. Non-handed design for quick and easy installation. Non-metallic open and closed stops assure silent operation. Extreme pressure, high and low temperature polymer type grease. Sold per pair. Zinc finish.

**Features**

- Telescopic Movement on Ball-Bearings
- Load Rating: 180 to 500 lbs. (based on application)
- Height: 3" (+/- 0.020")
- Clearance: 3/4" (+/-0.030")
- Heavy duty ball bearings carry the heaviest loads without sticking
- Heavy duty stops are designed to survive rough field use
- Non-disconnect

Part #	Length
KV8900-12	12"
KV8900-14	14"
KV8900-16	16"
KV8900-18	18"
KV8900-20	20"
KV8900-22	22"
KV8900-24	24"
KV8900-26	26"
KV8900-28	28"
KV8900-30	30"
KV8900-32	32"
KV8900-34	34"
KV8900-36	36"
KV8900-40	40"
KV8900-42	42"
KV8900-48	48"
KV8900-60	60"

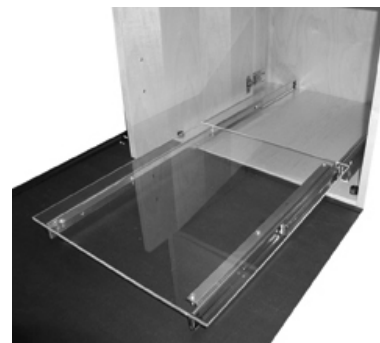
**KV8000 Under Mount Pull Out Slide**

Ideal for kitchen pantries, computer and entertainment centers or where a pull out shelf is needed. 130 pound class rating. Three ball bearings per inch for smooth and quiet operation. Over travel slide = length +.83". Hold in detent helps to prevent slide from creeping forward. Sold per pair.

**Features**

- Bottom mounting
- Telescopic Movement on Ball Bearings
- Load Rating: 130 Pound Class
- Height: 1.54"
- Clearance: 3/4" (Slide Only), 2 1/4" (With Brackets)
- Anochrome Finish
- Removable mounting brackets
- Hold-in detent
- Key-hole style mounting holes

Part #	Length
KV8000-12	12"
KV8000-14	14"
KV8000-16	16"
KV8000-18	18"
KV8000-20	20"
KV8000-22	22"
KV8000-24	24"
KV8000-26	26"
KV8000-28	28"



Maverick Hardware

KV Slides

Section B-2: KV Slides

KV 8157 Variable Height Keyboard Slides

3/4" Extension - With Shelf Tabs

Slides mounts underneath desk with brackets, while drawer members mount to a custom tray. 7 position, adjustable reversible mounting bracket. Friction latch securely holds keyboard in position. Quick disconnect and anti-rebounding, stay close feature. Adjustable from 2 11/32" to 3 11/16" high in 7/32" increments. Sold per pair.



Features

- Anochrome Finish
- Under Surface Mounting
- Ball Bearing Action
- Load Rating: 75 lb Class
- Overall Drop Height is Adjustable from 2 11/32" to 3 11/16" in 7/32" increments
- Clearance: 1 5/8" per side outboard, 5/8" per side inboard
- Mounting brackets adjust to 7 different heights and can be reversed for inboard/outboard mounting
- Track member quickly disconnects using positive lever release, easy installation
- Hold-in feature prevents keyboard tray bounce back



<u>Part #</u>	<u>Length</u>
KV8157-14	14"
KV8157-16	16"
KV8157-18	18"
KV8157-20	20"

KV8250 Pencil Drawer Slides

76 lb Capacity - 3/4" Extension

Mounting bracket adjusts to heights and can be reversed for "inboard and outboard" mounting. Track member quickly disconnects using positive lever release. Anti-rebounding "stay close" design holds pencil drawer in closed position yet allows easy opening. Sold per pair.



Features

- Under Surface Mounting
- Ball Bearing Movement Action
- Load Rating: 75 lb Class
- Overall Drop Height: 2 11/32" to 3 11/16" In 7/32" increments
- Clearance: 1 5/8" per side outboard position, 17/32" per side inboard position
- Anochrome Finish
- Mounting brackets adjust to 7 heights and can be reversed for inboard/outboard mounting
- Anti-rebound stay-close design holds pencil drawer in closed position yet allows for yeasy opening
- Track member quickly disconnects using positive lever releases



<u>Part #</u>	<u>Length</u>
KV8250-12	12"
KV8250-14	14"
KV8250-16	16"
KV8250-18	18"
KV8250-20	20"
KV8250-22	22"

KV Slides

Light Duty Slides**KV1805 Epoxy-Coated, Self-Close Euro-Style Drawer Slides****Features**

- Side Mounting
- Rollers
- Load Rating: 75-pound class
- 35.5mm Height
- 12.5mm plus .8mm clearance on each side
- White Finish
- 32mm mounting hole pattern
- Lift out disconnect
- Self close design
- KV1805B: 100 Sets; Multiple Cartons
- KV1805P: 1 Set Taped Together; 20 Sets per Carton



<u>Part #</u>	<u>Size</u>
KV1805B12WHB	300mm
KV1805B14WHB	350mm
KV1805B16WHB	400mm
KV1805B18WHB	450mm
KV1805B20WHB	500mm
KV1805B22WHB	550mm
KV1805B24WHB	600mm
KV1805P12WH	300mm
KV1805P14WH	350mm
KV1805P16WH	400mm
KV1805P18WH	450mm
KV1805P20WH	500mm
KV1805P22WH	550mm
KV1805P24WH	600mm

**KV1300 Box Drawer Slide****75 lb. Capacity - 3/4 Extension**

Kitchen cabinets, desks, bathroom vanities, architectural woodwork, store fixtures and related units. Features optional self-closing scale. Positive stop lever prevents accidental drawer removal. Ball bearing nylon rollers. Screws included. Sold per pair.

**Features**

- Side Mounting
- Clearance: 1/2" plus 1/32" minus 0" each side
- Load Rating: 75 lb Class
- Zinc Finish
- Ball bearing nylon rollers
- Positive stop lever prevents accidental drawer removal



<u>Zinc Part #</u>	<u>Length</u>
KV1300-12ZC	12"
KV1300-14ZC	14"
KV1300-16ZC	16"
KV1300-18ZC	18"
KV1300-20ZC	20"
KV1300-22ZC	22"
KV1300-24ZC	24"
KV1300-26ZC	26"

Maverick Hardware

KV Light Duty Slides

Section B-2: KV Slides

Light Duty Slides

KV1175 Under-Drawer Slide

Features

- Under drawer mounting
- Rollers
- Load Rating: 50 pound class
- Height: 1"
- 1/8" clearance on each side
- Mounts with staples or screws
- Drawers lift out for easy removal

<u>Part #</u>	<u>Size</u>	<u>Finish</u>
KV1175-22	22-5/8"	Zinc
KV1175-24	24"	Zinc



KV1129 Light Duty Drawer Slides

35 lb Capacity - 3/4" Extension

Light duty slide designed to adapt to most under the drawer mounting applications. 1/4" height, 1/4" clearance under the drawer. Zinc plated cold rolled steel finish. Features ball bearing movement. Friction disconnect. Rear socket and multiple hole pattern. Polybag Packaging. Sold per slide. Zinc finish.

Features

- Under Drawer Mounting
- Load Rating: 35 lb Class
- Height: .42"
- Clearance: 1/4" under the drawer
- Ball bearing movement
- Friction disconnect

<u>Part #</u>	<u>Length</u>
KV1129-12	12"
KV1129-14	14"
KV1129-16	16"
KV1129-18	18"
KV1129-20	20"
KV1129-22	22"
KV1129-24	24"



Pocket Door Slides

Pocket Door Slides

KV8071 EZ Pivot Door Slide

Features

- Packaged without hinge and base, allowing installers to use hinge/hinge base of their choice; Grass or Salice
- Load Rating: 30-pound class
- Maximum Dimensions: 24" High x 48" Wide (Horizontal Pivot Doors) 42" High x 24" Wide (Vertical Doors)
- Ebony Black Finish
- Cabinet acts as installation jig
- Cushioned stops and door hold-out
- 3-way adjustable door hinge
- Follower strip is attached to slide bracket



<u>Part #</u>	<u>Size</u>	<u>Finish</u>
KV8071-12	12"	Black
KV8071-14	14"	Black
KV8071-16	16"	Black
KV8071-18	18"	Black
KV8071-20	20"	Black
KV8071-22	22"	Black
KV8071-24	24"	Black

Choose ONE for 8071:

<u>Part #</u>	<u>Brand</u>	<u>Description</u>	<u>Style</u>	<u>Cup</u>	<u>Finish</u>
KV8080HKEZF-EB	Grass	Inset for 3/4" Thick Door	Free Swing	35 mm	Black
KV8080HKEZL-EB	Grass	3/8" Overlay for 3/4" Thick Door	Self Closing	40 mm	Black
KV8080HKEZS-EB	Grass	Inset for 3/4" Thick Door	Self Closing	35mm	Black
KV8085HKEZT-EB	Grass	Inset for 1" Thick Door	Self Closing	40 mm	Black
KV8086HKEZX-EB	Grass	Inset for 1 1/4" Thick Door	Self Closing	40 mm	Black
KV8080HKF SAL	Salice	Inset for 3/4" Thick Door	Free Swing	35 mm	Nickel
KV8080HKL SAL EB	Salice	3/8" Overlay for 3/4" Thick Door	Self Closing	40 mm	Black
KV8080HKS SAL EB	Salice	Inset for 3/4" Thick Door	Self Closing	35 mm	Black
KV8086HKX SAL EB	Salice	Inset for 1 1/4" Thick Door	Self Closing	40 mm	Black

Additional Choices if Needed:

<u>Part #</u>	<u>Description</u>
KV8090PCR	Cassette Roller for Raised Panel Doors
KV8080-96B	Pivot Door Roller with Screw

U.S. Futaba

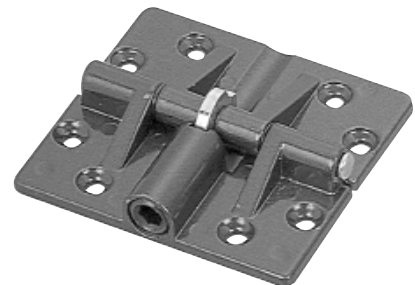
Bi-Fold Hinge

Features

- Perfect for entertainment centers with folding doors
- Built in stop
- Spring action (various tensions)
- Material made of zamak
- Available in black

<u>Part #</u>	<u>Size</u>
FT21050-000-00	2 3/8" x 2 9/16" • 60.5 x 65mm

U.S. Futaba, Inc.



Maverick Hardware

Pocket Door Slides

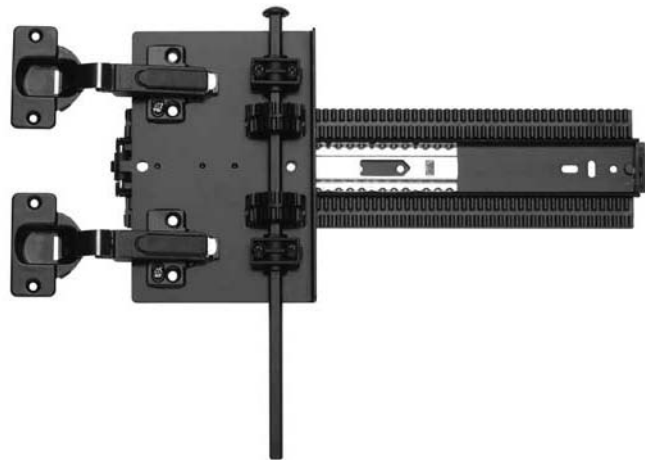


Pocket Door Slides

KV8091 4X4 Pocket Door Slide

Features

- Packaged without hinge or hinge base
- Side Mounting
- Ball Bearing Movement
- Load Rating: 75-pound class
- Maximum Dimensions: 24" High x 48" Wide (Horizontal Pivot Doors) 42" High x 24" Wide (Vertical Doors)
- Ebony Black Finish
- Rack and pinion design
- Multiple hinge options
- Greatly reduces door sag
- Requires partition installation



<u>Part #</u>	<u>Size</u>
KV8091-12	12"
KV8091-13	13"
KV8091-14	14"
KV8091-15	15"
KV8091-16	16"
KV8091-18	18"
KV8091-20	20"
KV8091-22	22"
KV8091-24	24"
KV8091-26	26"
KV8091-28	28"
KV8091-30	30"

Choose TWO for 8091:

<u>Part #</u>	<u>Brand</u>	<u>Description</u>	<u>Style</u>	<u>Cup</u>	<u>Finish</u>
KV8080HKEZF	Grass	Inset for 3/4" Thick Door	Free Swing	35 mm	Black
KV8080HKEZL	Grass	3/8" Overlay for 3/4" Thick Door	Self Closing	40 mm	Black
KV8080HKEZS	Grass	Inset for 3/4" Thick Door	Self Closing	35mm	Black
KV8085HKEZT	Grass	Inset for 1" Thick Door	Self Closing	40 mm	Black
KV8086HKEZX	Grass	Inset for 1 1/4" Thick Door	Self Closing	40 mm	Black
KV8080HKF SAL	Salice	Inset for 3/4" Thick Door	Free Swing	35 mm	Black
KV8080HKL SAL EB	Salice	3/8" Overlay for 3/4" Thick Door	Self Closing	40 mm	Black
KV8080HKS SAL EB	Salice	Inset for 3/4" Thick Door	Self Closing	35 mm	Black
KV8086HKX SAL EB	Salice	Inset for 1 1/4" Thick Door	Self Closing	40 mm	Black

Additional Choices, KV 8091 Full Overlay Kit

<u>Part #</u>	<u>Description</u>	<u>Finish</u>	
KV8090S36	36" Pinion Shaft	Black	
KV8090S48	48" Pinion Shaft	Black	
KV8090S72	72" Pinion Shaft	Black	
KV8091FULL3/4M	Grass Full 3/4" Overlay Kit for KV 8091	Black	See next page for description
KV8091FULL3/4S	Salice Full 3/4" Overlay Kit for KV 8091	Black	See next page for description

Pocket Door Slides



Pocket Door Slides

KV8091 Pocket Door Full Overlay Kit

Features

- Mounts directly to KV 8091 Series Slide
- Load Rating: 75 Pound Class
- Black Finish
- Provides a full door overlay on doors up to 3/4" thick
- Does not compromise key performance features of 4X4 Pocket Door System
- Systems for both Grass and Salice hinges
- Overlay kits require the use of a KV 8091 Series Slide, a pinion shaft, and a partition wall within the cabinet

Part #	Description	Finish
KV8091FULL3/4M	Grass Full 3/4" Overlay Kit for KV 8091	Black
KV8091FULL3/4S	Salice Full 3/4" Overlay Kit for KV 8091	Black

Typical Overlay Applications

Door Thickness	Amount of Overlay	Pocket Width
3/4"	3/4"	1 3/4"
13/16"	11/16"	1 13/16"
7/8"	5/8"	1 7/8"
15/16"	9/16"	1 15/16"
1"	1/2"	2"
1 1/16"	7/16"	2 1/16"
1 1/8"	3/8"	2 1/8"
1 3/16"	5/16"	2 3/16"
1 1/4"	1/4"	2 1/4"

