

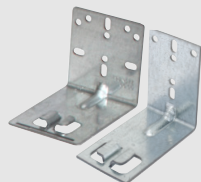
# DYNAPRO

The market's first synchronized slide system creates the smoothest, quietest soft-close undermount drawer slide available today.

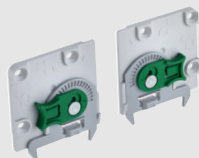
Rated for 48" wide drawers and available in a heavy duty version, the DYNAPRO is suitable for the market's ever increasing demands for larger, more stable drawer systems. DYNAPRO is the most complete family of slides with a multitude of options and accessories required by demanding consumers.



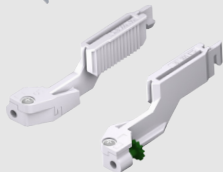
DYNAPRO Soft-close undermount slides are available in 9", 12", 15", 18", 21", 24", 27" & 30" lengths. The slide is suitable for drawer material of 1/2" to 5/8", as well as a version for 3/4" drawer material. You have the option of a 2D slide offering height and side adjustment, or a 3D slide offering height, side and rear tilt adjustment. DYNAPRO is available with a standard dynamic load rating of 88 pounds or a heavy duty dynamic load rating of 132 pounds.



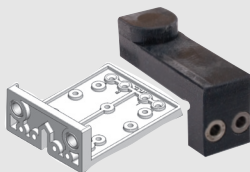
DYNAPRO Rear Mounting Sockets are specifically designed for face frame applications. Available in standard or narrow widths.



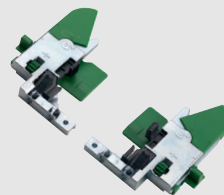
DYNAPRO Adjustment Adapters are used in conjunction with all 3D and heavy duty slides. They offer rear tilt of +4.0mm and true single step parallel side-to-side adjustment.



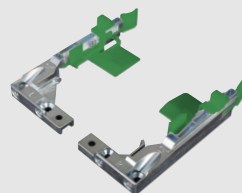
DYNAPRO Depth Adjusters are perfect for inset applications. You can adjust your drawer out of the cabinet up to +4.5mm.



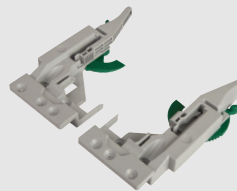
DYNAPRO Drilling Jigs help to simplify the assembly process. They locate the drawer hook hole, the Front Locking Device and the adjustment adapter.



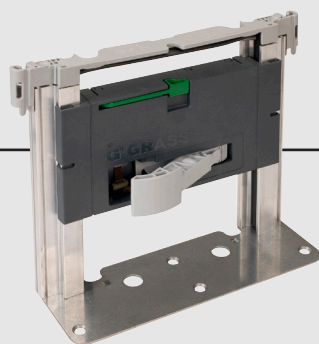
DYNAPRO 2D Front Locking Devices offer height adjustment of +3.5mm and side-to-side adjustment of  $\pm 1.5$ mm. Minimum inside drawer width is 7 3/32".



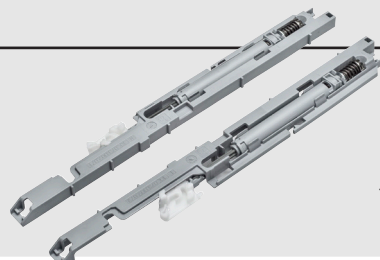
DYNAPRO 1D Narrow Front Locking Devices offer height adjustment of +3.5mm. Minimum inside drawer width is 3 3/4".



DYNAPRO Eco Front Locking Devices with flange are required for the Vionaro metal drawer system and are also used for flange-mount applications.



Sensomatic is an electronic opening system designed to work with DYNAPRO. You can operate up to 30 opening units from one power supply and open drawers as large as 48" wide.



Tipmatic for DYNAPRO is a touch-latch device that replaces your soft-close device and perfect for "Handle-free" push-to-open cabinets. Tipmatic works for all DYNAPRO from 9" to 30" lengths.

VIONARO is the first metal drawer system to work on a standard undermount drawer slide - DYNAPRO 2D. It is currently available with the following:

- 15", 18", 21" lengths.
- 3 1/2" and 7 1/4" heights.
- Graphite & Silver Grey finishes.
- 3 dimensions of adjustment built into slide.
- Slim 13mm side width.



Please contact your local GRASS Territory Manager or call 1-800-334-3512 for more information.

 **GRASS**<sup>®</sup>