

Section G-2: Computer and Office Accessories

Computer & Office Accessories

Section G-2: Computer and Office Accessories

Maverick Hardware

Computer Accessories

Wall Mounted Flat Panel TV Accessories

KVMM-100 VESA Compliant Mounting Arms

Features

- Aluminum Finish
- TV Size Rating: VESA 75/100 Compliant
- Max TV Weight: 40 pounds
- Built-in Level
- Cable Management System
- Extends only 2.75" from Wall

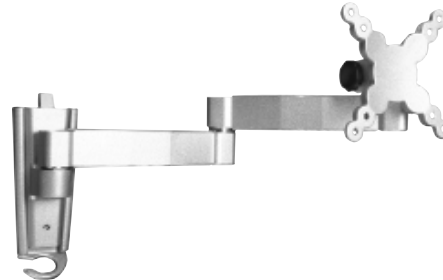


Wall Mounted Flat Panel TV Accessories

KVMM-200 VESA Compliant Mounting Arms

Features

- Aluminum Finish
- TV Size Rating: VESA 75/100 Compliant
- Max TV Weight: 40 pounds
- Built-in Level
- Cable Management System
- Extends 16.5" from Wall
- Tilt/ Swivel



Wall Mounted Flat Panel TV Accessories

KVMM-300 TV Mounting Brackets

Features

- Aluminum Finish
- TV Size Rating: VESA 100/200 Compliant
- Max TV Weight: 40 pounds
- Built-in Level
- Extends 2.5" from wall



CPU Holder

Stores CPU vertically beneath surface to protect against contaminants and save valuable workspace. Adjusts to support most CPU sizes (13 1/2" to 24"H, 3 1/4" to 8 1/2" W, any depth). Securely clamps the CPU in position. 50 lb. weight capacity. All metal construction finish: black wrinkle powder coat. No tools needed to adjust height of width range. Sold per each.



<u>Part #</u>	<u>Description</u>
KVKCPU-3	CPU Holder, Slide Out and Pivot
KVKCPU-4	Locking CPU Holder



Keyboard Trays

Keyboard Trays

KVK5710 Keyboard Tray

Features

- Integral, adjustable wrist rest
- Adjustable drop height
- Friction latch in open position
- Mouse tray opens to either left or right side
- Black finish
- Precision steel ball bearing slide assembly
- Brackets mount in outboard position under work surface for application widths 24" or greater, and in the inboard position for widths less than 24"
- 21-3/4" x 18" tray size
- Load rating: 75-pound class (BHMA, KCMA, and BIFMA applications)
- Height: 7 positions from 2-19/32" to 4-1/4"
- Fits 24" wide knee space under desk or other work surface



Keyboard Trays

KVKD-1000 Keyboard Tray

Features

- Precision steel ball bearing slide assembly with lockout
- 28.75" Lycra Gel/PVC cushion wrist rest wraps around the front edges of drawer
- Integral ambidextrous mousing surface inside tray
- Injection molded 25" x 5" accessory tray with extended slides
- Fits 29" wide spaces
- 25-3/4" x 10" Tray Size
- Black finish
- Brackets mount in outboard position under work surface for application widths 29" or greater, and in the inboard position for widths less than 26.75"
- Load rating: 75-Pound class (BHMA, KCMA, and BIFMA applications)



Keyboard Trays

KVKD-50 Keyboard Tray

Features

- Brackets mount in outboard position under work surface for application widths 29" or greater, and in the inboard position for widths less than 26.75"
- Precision steel ball bearing slide assembly with lockout
- 20" x 10" Tray size
- Load rating: 20-Pound class (BHMA, KCMA, and BIFMA Applications)
- Adjustable Height -7 positions from 2.25" x 3.60"
- Fits 23" wide spaces
- Black finish
- Storage areas for pens, paper clips and other office accessories
- Injection molded platform



Maverick Hardware

Keyboard Drawers

KVKD-100

Keyboard Drawer 23"

Brackets mount in "outboard" position under work surface for application widths 23" or greater, and in the "inboard" position for widths greater than 20 3/4". A key hold 7 position uniquely concealed mounting brackets allow for simple installation at a variety of heights. Lever disconnect for easy tray installation, removal and adjustment. Steel construction with durable black texture finish ergonomically designed. Fits 23" wide space. 75 pound class, standard black finish. Precision steel ball bearing slide assembly with lockout. Sold per each.



Accessories

KVKD010 Under swivel Mouse Tray for KD-100

KVKD-1020

Keyboard Drawer with Accessory Tray 28"

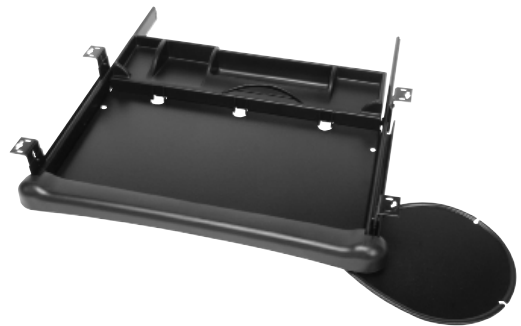
Brackets mount in "outboard" position under work surface for application widths 29 or greater, and in the "inboard" position for widths greater than 26.75". 7 position adjustment, fits 29" wide space. 75 pound class, standard black finish. Precision steel ball bearing slide assembly with lockout. Sold per each.



KVKD-120

Keyboard Drawer with Accessory Tray and Mouse Surface 23"

Brackets mount in "outboard" position under work surface for application widths 23" or greater, and in the "inboard" position for widths greater than 20 3/4". 7 position adjustment. fits 23" wide space. 75 pound class. Includes mouse surface. Accessory tray.



Keyboard Trays and Supports

Keyboard Trays

KVKD-75 Keyboard Tray

Features

- Brackets mount in outboard position under work surface for application widths 29" or greater, and in the inboard position for widths less than 26.75"
- Precision steel ball bearing slide assembly with lockout
- 20" x 10" Tray size
- Load rating: 20-Pound class (BHMA, KCMA, and BIFMA Applications)
- Adjustable Height -7 positions from 2.25" x 3.60"
- Fits 23" wide spaces
- Black finish
- Storage areas for pens, paper clips and other office accessories
- Injection molded platform



Keyboard Support

KVKSD-4 Keyboard Platform

Features

- AKP35 KEYNETIX® Mechanism
- 2T18 Track
- PC2524 Platform
- Black textured finish
- 25" slim-profile keyboard/mouse platform with 25" gel palm rest
- One-piece keyboard platform with dual mousing areas
- Size of platform: 25" wide x 10" deep
- Mousing area modularity allows left or right mousing and can easily be switched at any time
- Slim profile for maximum leg clearance and ease of adjustment
- Phenolic construction



Keyboard Support

KVKSD-2 Keyboard Platform

Features

- AKP35 Optimal Mechanism
- 2T18 Track
- PZ1824 Platform
- Black textured finish
- 20" slim-profile keyboard platform
- 18" gel palm rest
- Non-skid surface pads keep keyboard stationary
- Option: OMS or OMN mouse



Custom Accents

CPF-89552-1

Features

- Articulating Computer Keyboard Tray
- Fully articulating, swivels and retracts, includes reversible mouse tray, sliding track and hardware.
- Available in black.

**Special order item. Available in full case only.*



Maverick Hardware

Keyboard Trays

Fulterer

FUL1600 – Keyboard Tray Pull Out

Fulterer

Features

- Top mount
- Load Capacity – up to 75 lbs

Specifications

- Keyboard tray pull out can be used for all keyboard designs
- Easy to add to existing furniture and work surfaces
- Roller drawers slide with 6 pull outs stops
- Screw mount brackets permit installation under any work surface
- Overrun clip incorporated into cabinet profile prevents pull out from accidentally coming out
- Slotted back for ease of cable management
- A very comfortable gel wrist support is included
- Material – drawer slide, powder coated cold rolled steel tray; polystyrene, textured
- Includes: 1 piece keyboard, 1 piece bottom board, 1 pair drawer slide, 4 piece bracket screws and mounting instructions



<u>Part#</u>	<u>Width</u>	<u>Depth</u>	<u>Height</u>
FUL1600	624mm (24.57")	380mm (14.96")	96mm (3.78")

Fulterer

FUL1601 – Keyboard Tray Pull Out (Wide)

Fulterer

Features

- Top mount
- Load Capacity – up to 75 lbs

Specifications

- Keyboard tray pull out can be used for all keyboard designs
- The extra width of this keyboard pull-out allows the mouse to be used on either side of the keyboard
- A convenient pencil tray on the rear adds versatility
- Easy to add to existing furniture and work surfaces
- Roller drawers slide with 6 pull outs stops
- Screw mount brackets permit installation under any work surface
- Overrun clip incorporated into cabinet profile prevents pull out from accidentally coming out
- Slotted back for ease of cable management
- A very comfortable gel wrist support is included
- Material – drawer slide, powder coated cold rolled steel tray; polystyrene, textured
- Includes: 1 keyboard tray, 1 bottom board, 1 pair drawer slide, 1 gel wrist support, 4 piece bracket screws



<u>Part#</u>	<u>Width</u>	<u>Depth</u>	<u>Height</u>
FUL1601	720mm (28.35")	380mm (14.96")	96mm (3.78")

Keyboard Trays

Fulterer

FUL1602 – Keyboard Tray Pull Out with Pull Out Mouse Tray



Features

Top mount
 Load Capacity – up to 75 lbs

Specifications

- Keyboard tray pull out can be used for all keyboard designs
- Mouse tray, with mouse pad, pulls out to left or right
- The extra width of this keyboard pull-out allows the mouse to be used on either side of the keyboard
- A convenient pencil tray on the rear adds versatility
- Easy to add to existing furniture and work surfaces
- Roller drawers slide with 6 pull outs stops
- Screw mount brackets permit installation under any work surface
- Overrun clip incorporated into cabinet profile prevents pull out from accidentally coming out
- Slotted back for ease of cable management
- A very comfortable gel wrist support is included
- Material – drawer slide, powder coated cold rolled steel tray; polystyrene, textured
- Includes: 1 keyboard tray, 1 bottom board, 1 pair drawer slide, 1 gel wrist support, 4 piece bracket screws



<u>Part#</u>	<u>Width</u>	<u>Depth</u>	<u>Height</u>
FUL1602	624mm (24.57")	380mm (14.96")	126mm (4.96")

Laptop/Pull-Out

FUL1660 Black



Keyboard tray pull-out can be used for all laptop computers. Easy to add to existing furniture. Screw-mount brackets permit installation under any word surface. Slotted back for ease of cable management. The lock provides greater security especially in desk sharing office environments. Drawer slides has powder coated cold rolled steel tray: polystyrene, textured. Bearing Material: Cabinet profiles with nylon rollers. Load capacity: Dynamic up to 75 lbs. Sold per each.



Maverick Hardware

Slides

KV 8157

Variable Height Keyboard Slides

75 lb Capacity * ¾" Extension

Slides mounts underneath desk with brackets, while drawer members mount to a custom tray. 7 position, adjustable reversible mounting bracket. Friction latch securely holds keyboard in position. Quick disconnect and anti-rebounding, stay close feature. Adjustable from 2 11/32" (KV8150) to 3 11/16" (KV8157) high in 7/32" increments. Ebony black finish (black zinc chromate electro plated with a lacquer coat) Sold per pair, 10 pairs per box. Screws included.



KV8157 * Polybag Packaging

Sold 1 pair per bag, screws included.

<u>Part #</u>	<u>Length</u>
KV8157-14	14"
KV8157-16	16"
KV8157-18	18"
KV8157-20	20"



KV8250 Pencil Drawer Slides

76 lb Capacity * ¾" Extension

Mounting bracket adjusts to heights and can be reversed for "inboard and outboard" mounting. Track member quickly disconnects using positive lever release. Anti-rebounding "stay close" design holds pencil drawer in closed position yet allows easy opening. Sold per pair.



<u>Part #</u>	<u>Length</u>
KV8250-12	12"
KV8250-14	14"
KV8250-16	16"
KV8250-18	18"
KV8250-20	20"
KV8250-22	22"



KV8414 100# Telescopic, Full-Extension Drawer Slide with Hold-out

Detent

The Knappe and Vogt 8414 full-extension drawer slide with hold-out is specially designed for use I pull-out word surfaces such as key-board trays, auxiliary writing surfaces, computer equipment and other under-surface applications. Non-handed design and 32mm hole pattern for easy installation. Slides are tested to meet or exceed ANSI performance standards as established by BIFMA, KCMA and BHMA. Sold per each, 10 pair/

box.



<u>Part #</u>	<u>Length</u>
KV8414-12	12"
KV8414-14	14"
KV8414-16	16"
KV8414-18	18"
KV8414-20	20"
KV8414-22	22"
KV8414-24	24"



Office Accessories

Pencil Tray Pull-Out

This pencil tray pullout provides a complete solution in a compact unit. The front of the frame allows easy attachment to a drawer front. Frame and drawer slides are black and the tray is black plastic.

Filterer USA



Part #	Min. Width	Min. Depth
FUL1535	346mm (13 5/8")	350mm (14")
FUL1550	346mm (13 5/8")	500 mm (20")
FUL1560*	585mm (23")	450mm (18")

Door Bumper Pads

Features

- 3/8" diameter x 3/32" thick
- White pads are 1/8" thick

Part #	Description	Size per roll
DF38FBR-1M	Brown Felt	1,000
DF38FBR-5M	Brown Felt	5,000
DF38FWH-1M	White Felt	1,000
DFH38N-1M	Hex Natural Rubber	1,000
DFH38N-5M	Hex Natural Rubber	5,000
DFR38N-1M	Round Natural Rubber	1,000
DFR38N-5M	Round Natural Rubber	5,000

Plastic Vent for Computer Furniture

Plastic construction. 2 11/16" wide 8 15/16" long O.D. Fits 2 7/16" wide x 8 3/8" long hole.

Bainbridge Manufacturing, Inc.



Part #	Color
BA1970-WH	White
BA1970-BK	Black

Bumper Specialties

Features

- Molded, Self-Adhesive, 100% Polyurethane Bumpers
- Stocked in Clear only
- Custom shapes, sizes, colors and pad configurations are available for special order
- Clear bumpers are practically invisible when applied to colored or see through surface
- All bumpers available in aggressive synthetic rubber adhesive or high performance Acrylic Adhesive



Ideas for use

- Holds cutting boards firmly on in place on counter surface
- Keeps picture frames stable, preventing from damaging walls
- Dampens harsh sounds of slamming cabinet doors, drawers or lids
- Prevents speakers, electronics and computers for vibrating or sliding
- Quiet doorknobs, eliminating nicks and unsightly damage to walls

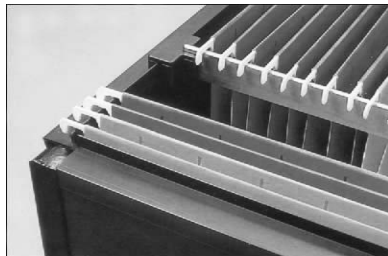
*See Section J-3 page 12 for pictures

Part #	Description	Dimensions
BS12SD	Dome Dumpers	.375 diam x .15 ht
BS1SD	Flat Bumper	.5 diam x .14 ht
BS33SD	Pyramid Shape	.5 diam x .15 ht
BS58SD	Cone Shape	.5 diam x .20 ht
BS7	Simple	.335 diam x .085 ht

Custom Accents Hanging File Rail

Custom Accents

Part #	Description	Color
CPF-32500	1/2" File Rail 2.5 meter	Black
CPF-312501	1/2" File Rail 2.5 meter	White
CPF-580FR	5/8" File Rail 2.5 meter	Black
CPF-581FR	5/8" File Rail 2.5 meter	White



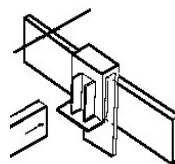
Custom Accents CPF-89305

Narrow Pencil Drawer with ball bear slides and hardware

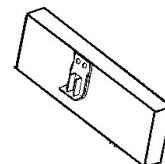
Custom Accents



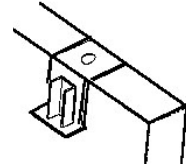
Kinetron



KIK1-ZC
1/2" thick frame



KIK2-ZC
Flush Mount



KIK1-ZC
Top Mount

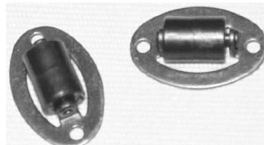
- A simple, less costly alternative to cumbersome assemblies
- that sit inside the drawer.
- Mounts inside any file drawer
- Holds 1/8" file bars
- Strong 16 gauge steel
- Easy to install – no cutting, no grooves
- Available in zinc or black oxide finish

Do-It-Yourself Lazy Susan SYXSWIVELROL2

Roller



Nylon roller mounted on a steel base for screw attachment. For #6 screws on 32mm hole spacing.



Maverick Hardware

Grommets



Custom Accents

50mm Wire Grommets

Part #	Size	Color
CPF50-BK	50mm 2"	Black
CPF50-WH	50mm 2"	White
CPF50-BN	50mm 2"	Brown
CPF50-AL	50mm 2"	Almond
CPF50-GR	50mm 2"	Grey

Custom Accents

60mm Wire Grommets

Part #	Size	Color
CPF60-BK	50mm 2 3/8"	Black
CPF60-WH	50mm 2 3/8"	White
CPF60-BN	50mm 2 3/8"	Brown
CPF60-AL	50mm 2 3/8"	Almond
CPF60-GR	50mm 2 3/8"	Grey



Black



White



Brown

Custom Accents

80mm Wire Grommets

Part #	Size	Color
CPF80-BK	80mm 3 1/8"	Black
CPF80-WH	80mm 3 1/8"	White
CPF80-BN	80mm 3 1/8"	Brown
CPF80-AL	80mm 3 1/8"	Almond
CPF80-GR	80mm 3 1/8"	Grey



Lt. Gray



Almond



Gold

Custom Accents

60mm Flexigrom Grommets

Part #	Size	Color
CPFL60-BK	60mm 2 3/8"	Black
CPFL60-BN	60mm 2 3/8"	Brown
CPFL60-WH	60mm 2 3/8"	White
CPFL60-GR	60mm 2 3/8"	Grey



Beige



Battleship Gray



Chrome

Custom Accents

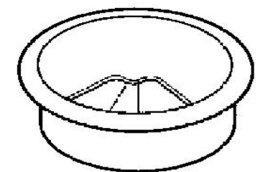
80mm Flexigrom Grommets

Part #	Size	Color
CPFL80-BK	80mm 3 1/8"	Black
CPFL80-WH	80mm 3 1/8"	White
CPFL80-GR	80mm 3 1/8"	Grey

Grommets

EDP "Flip Top" Series 2 1/2" Hole

Most popular grommet, especially designed to accommodate computer and computer peripheral plugs, as well as outsized telephone amphenols and business machine plugs. Accommodates plugs up to 2 1/4", well suited for most computer related uses. Colors available in Antique Bronze (11), Polished Chrome (26), Satin Chrome (26D), and Brass (3).



Part #	Hole Size	Overall		Cord Slot	
		Diameter	Inside Diameter	Size	Depth
DGEDP5-11	2 1/2"	3"	2 1/4"	7/8"	5/8"
DGEDP5-26	2 1/2"	3"	2 1/4"	7/8"	5/8"
DGEDP5-26D	2 1/2"	3"	2 1/4"	7/8"	5/8"
DGEDP5-3	2 1/2"	3"	2 1/4"	7/8"	5/8"

U.S. Futaba

Metal Grommets (587 Series)

Part #	Cover	Drilling Hole	Finish
FT58750-BR	76mm	64mm	Brass
FT58750-CH	76mm	64mm	Chrome

U.S. Futaba, Inc.