

Catches

Maverick Hardware

Catches

Magnetic Catch

Inset Overlay 3/8 Lip

Part #	Color
AMC9765-3PT	Tan
AMC9765-3W	White

Catch	1 15/16" x 3/4" W x 11/16" H
Strike A	1 1/8" L x 7/8" W x 3/4" H
Strike B	1 1/8" L x 7/8" W x 3/4" H
Strike C	1 9/16" L x 1 1/8" W

Tenite case with magnetic strike.
Holds 5-11 lbs. Use (4) #6 T.H. x 1/2" screws. Packaged with catch and 3 strikes. 25 per box.



Magnetic Catch

AMC9783-AL

Catch	Aluminum Case
Size	12" L x 1" W x 5/8" H
Finish	Aluminum
Size	1" x 3/4"
Holds	5-11 lbs
Strike	Steel (AE), 1 1/8" L x 3/4" W
Screws	(2) #6 T.H. x 1/2" (1) #5 F.H. x 1/2"

Adjustable slots polybagged with strike and screws. 25 per box.



Magnetic Catch

AMC9793-PT

Catch	Plastic Case
Size	3/4" x 2" x 1/2"
Finish	Tan Plastic
Strike Size	3/4" x 1 1/8"
Holds	5-11 lbs.

Polybagged with strike and screws. 25 per box.

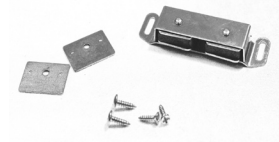


Double Magnetic Catch

AMC33772-AL

Catch	Aluminum Case
Size	1 1/2" L x 13/16" W x 1/2" H
Strike	Steel, 1 1/4" L x 7/8" W
Screws	(2) #6 T.H. x 1/2"
Screws	(1) #6 F.H. x 1/2"

Adjustable slots polybagged with strike and screws. Sold per each, 25 per box.

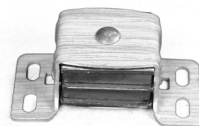


Heavy Duty Magnetic Catch

AMC9798-AW

Catch	Aluminum Case
Size	1 1/16" x 2 1/32" x 13/16"
Finish	Woodgrain Aluminum
Size	1" x 3/4"
Holds:	12-19 lbs.

Packaged with two strikes and screws. 25 per box.



Magnetic Catch

EP591

Aluminum case with lifetime magnet is self-aligning to strike plate. Polybagged with strike and screws.

Catch	1" W x 11/16" P x 2 1/16" L
Strike	1 1/8" L x 13/16" W



Heavy Duty Magnetic Catch

For Larger/Heavier Door

EP592

Aluminum case with lifetime magnets are self-aligning to strike plate. Polybagged with strike and screws.

Catch	1" W x 47/64" P x 2 1/16" L
Strike	1 1/8" L x 13/16"

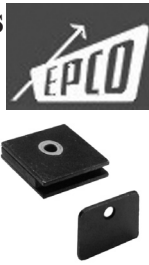


Catches

Magnetic Catch for Single Doors**EP541**

Steel case with Black Zinc plating.

Catch 1" W x 5/16" P x 59/64" D
 Strike 1 1/8" W x 13/16" H

**Magnetic Catch for Double Doors****EP542**

Steel case with black zinc plating.

Catch 2" W x 9/32" P x 25/32" D
 Strike 2- 1 1/8" W x 13/16" H
 Strike 1- 2" W x 25/32" H

**Magnetic Catch for Larger & Heavier Doors****EP543**

Steel case with black zinc case.

Catch 3" W x 9/32" P x 25/32" D
 Strike 2- 1 1/8" W x 13/16" H
 Strike 1- 3" W x 25/32" H

**Round Magnetic Catch****EP600**

Press fits into 5/8" bore. Only the face of aluminum case is exposed. Floating rubber magnet is self-aligning to strike.

Aluminum finish. Screw included.

Sold per each.

Catch Head: 3/4" dia.
 Base: 5/8" dia. X 3/4" L
 Strike 3/4" dia.

**Magnetic Catch for Double Doors**

Part # **Color**
 EP1015BR Brown
 EP1015WH White

Plastic Case with 64mm Hole Centers

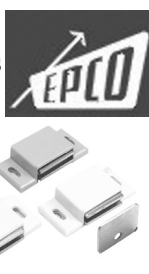
Catch 2 7/8" W x 17/32 P x 13/16" D
 Strike 2- 1 3/16" W x 7/8" H

**Magnetic Catch**

Magnetic catch for cabinet doors. Plastic case is self aligning to strike plate. Lifetime magnet.

Part # **Color**
 EP1000TN Tan
 EP1000WH White

Catch 2" W x 31/64 P x 15/16" D
 Strike 1 1/8" W x 13/16" H

**Magnetic Catch**

For cabinet mounts on doors

Part # **Color**
 EP1001TN Tan

High density polyethylene case houses lifetime magnet. Self-aligning to

L-shape strike. Standard case color tan.

Catch 1 15/16" L x 45/64" W
 Strike 1 1/8" L x 3/4" W

**Single Magnetic Touch Latch**

Part # **Color**
 EP507BK Black
 EP507WH White

Plastic case. Polybagged with strike plate and screws. 1 3/32" W x 1 11/32" D.

**Double Magnetic Touch Latch**

Part # **Color**
 EP508BK Black
 EP508WH White

Plastic case. Polybagged with strike plates and screws. 2 5/16" W x 1 11/32" D.

**Magnetic Latch**

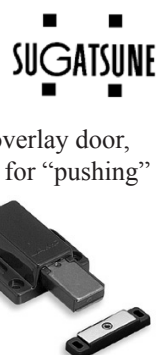
Part # **Color**
 SGML80-BLK Black
 SGML80-BRN Brown
 SGML80-WHT White

Material: Plastic housing and steel strike. For overlay door, allow 1/8" gap between door and cabinet frame for "pushing" space. Screws included. Sold per each, 20 per box.

**Long Stroke Magnetic Latch**

Part # **Color**
 SGML120-BRN Brown
 SGML120-WHT White

Material: Plastic housing and steel strike. For overlay door, allow 1/8" gap between door and cabinet frame for "pushing" space. Screws included. Sold per each, 20 per box.



Maverick Hardware

Catches

Bore in Magnetic Touch Latch EP512

Black plastic case. Press fits into 10mm hole.



Wrap Around Strike Plates

Part #	Color
EP509BK	Black
EP509B	Polished Brass
EP509CR	Polished Chrome

For 1/4" and 3/16" glass. For use with 507, 508, 512, 513, 514-BL-PWS, and 515-BL-PWS touch latches. Polybagged with stick on cushion.



Wrap Around Strike Plates with Lip

Part #	Color
EP516BK	Black
EP516B	Polished Brass
EP516CR	Polished Chrome

For 1/4" and 3/16" glass. For use with 507, 508, 512, 513, 514-BL-PWS, or 515-BL-PWS touch latches. Polybagged with stick on cushion.



K-Catch

SGK-CATCH-WHT

Material: Catch=Polyacetal
Strike=Polyamid
Color=Natural White

Screws not included. Sold per each, 100 per box.



Rotary Catch

Polyacetal rotary catch with polyethylene roller. Screws sold separately.



Part #	Color	Overall Width
SG6900-WHT	White	1-9/64"
SG6901-WHT	White	1-15/64"



Flexicatch Door Catch

Nylon with stainless steel spring clip for extreme flexing and alignment ease. Comes complete with plated adjustable door strike and plated mounting screws.



Part #	Color	
BA22-WH	White	22 lbs pull



Sliding Door Pulls and Knobs

Features

- Door thickness should be 1/4"
- Made out of aluminum
- Length is 2 3/4"

Part #	Finish
EPGP15-A	Satin Clear Anodized
EPGP15-B	Satin Brass Anodized
EPGP15-BL	Satin Black Anodized



Adjustable Tension Ball Catch

Turn screws to adjust tension. Solid brass case. Polybagged with screws.

Part #	Dull Brass
Case	43mm H x 8mm W x 10mm P
Strike	25mm H x 7mm W x 9mm P

Part #	Dull Brass
Case	49mm H x 9mm W x 11mm P
Strike	28mm H x 8mm W x 11mm P

Part #	Dull Brass
Case	58mm H x 11mm W x 13mm P
Strike	36mm H x 9mm W x 13mm P

Part #	Dull Brass
Case	69mm H x 13mm W x 15mm P
Strike	42mm H x 11mm W x 15mm P

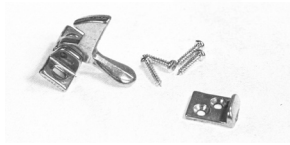


Catches

Elbow Catch**IV2A92** Aluminum

Plate size: 1 3/8" L x 5/8" H.

Screws included. Sold per each, 25 per box.

**Roller Catch****EP504**

Steel case.



Catch 1 17/64" W x 9/16" P x 9/16" D
Strike 1 1/4" W x 3/8" H

**Roller Catch****AMC9823-2G**

With spurs, for overlay or flush doors.

Steel with polyethylene roller.

Size 1 1/4" x 1 3/8" x 5/8"

Finish Perma Brite Zinc

Screws included. Sold per each, 200 per box.

**Mini Touch Latch**

Steel and plastic case. Plastic strike.

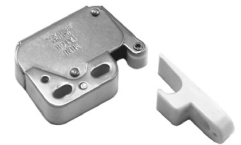
Polybagged with strike, screws and nails.

**Part #** **Finish**

EP505B Brass

EP505N Nickel

Catch 1" W x 1 3/32" H x 7/16" P
Strike 1 1/4" H x 7/16" W x 3/16" P

**Solid Brass Elbow Catch**

The catch features elongated holes to provide adjustment. The strike features one adjustable screw hole and a fixing screw hole. Plate size 18 mm long x 22.5 mm high. Screws included. Solid brass construction. Sold per each, 100 per box.

**Part #** **Finish**

EP1018B Bright Brass

EP1018N Nickel

Push Latch**Non-Magnetic**

Plastic casing, sold with screws. Sold per each, 30 per box.

**Part #**

SGMC37-BLK

SGMC37-WHT

SGMC37-BRN

Finish

Black

White

Brown

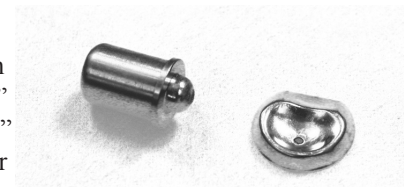


Case 57mm L x 40mm W x 16mm H.
Strike Extension 20mm
Holding Power 18lbs.

Bullet Catches

KV901 Varnish proof steel catch with barrel and spring 3/8" diameter, 1/2" long, 5/8" diameter strike. 100 per box.

KV902 Steel catch with barrel and spring 21/64" diameter, 3/8" long, 5/8" diameter strike. 100 per box.



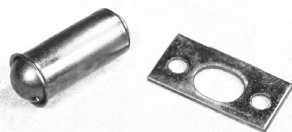
Maverick Hardware

Catches

Adjustable Catches

KV903 Adjustable brass catch. 3/8" diameter, 5/8" long, 9/16" x 1 1/16" diameter strike. 100 per box.

KV905 Adjustable brass look catch. 1/2" diameter, 1 1/32" long, 5/8" x 1 1/4" diameter strike. 50 per box with screws.



Surface Bolts

Polybagged with screws. 20 per box.

Part #	Size	Finish
CRSB873-26	3"	Chrome
CRSB873-3	3"	Brass
CRSB873-10B	3"	Oil Rubbed Bronze
CRSB876-26	6"	Chrome
CRSB876-3	6"	Brass
CRSB876-10B	6"	Oil Rubbed Bronze
CRSB8712-26	12"	Chrome
CRSB8712-3	12"	Brass
CRSB8712-10B	12"	Oil Rubbed Bronze



"Secret" Gate Latch

Case: 2" x 2 3/8". Interchangeable left of right-handed mounting. Sold per each, 12 per box.

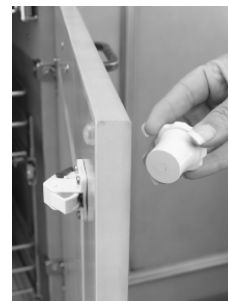
Part #	Finish
KV989AL	Aluminum Look
KV989BR	Brass Look



Catch and Key System

Lifetime Guarantee

The Rev-A-Lock catch and key system designed to combine the security of a lock with the simplicity of a catch. A magnetic "key" placed on the cabinet door releases the catch. When the magnet is removed, the catch springs back, so when the door is closed, it is locked. Use in doors and drawers from 1/2" to 1 1/2". Sold with screws. Lock and key sold separately per each, 25 per box.



Part #	Description
RVRL201	Lock with Strike

Flexa-Touch Drawer Opener

BA1021

Mounted to the back of the drawer. Works like a touch latch. Press drawer forward about 1/8" and it springs open. Excellent for flush drawers. 7/8" adjustment (2 1/8" min., 3" max.) Screws included. Sold per each, 100 per box.



Cliffside Cabinet Catches - Cupboard Latch

Solid brass construction. Thumb turn case.

Catch	1 3/8" W x 2" H
Latch	1/2" W x 2" H

Part #	Finish
CSSBCL-FB	Flat Black
CSSBCL-PB	Polished Brass
CSSBCL-PC	Polished Chrome
CSSBCL-SS	Silver Satin
CSSBCL-OA	Old Antique
CSSBCL-VB	Venetian Bronze
CSSBCL-PN	Polished Nickel
CSSBCL-OC	Old Copper
CSSBCL-IR	Iron
CSSBCL-AB	Antique Brass

