

Locks and Keys

Maverick Hardware

National Cabinet Locks

A complete selection of locks

Door and drawer locks for virtually every application, every security requirement

Locking devices every description for use in schools, institutional and commercial buildings

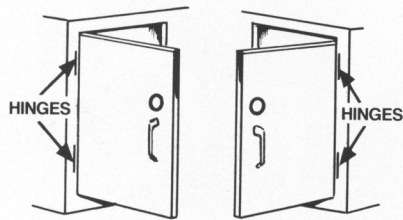
Packaged for your convenience

All hardware is individually packed in see thru poly bags for product protection and easy inspection.

How Cabinet Locks Are Used

Door Application

Bolt or cam at side locks to frame.



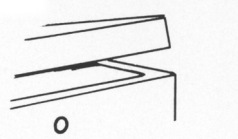
Left Hand

Right Hand

At which edge of door hinges are located, determines hand of door when facing door.

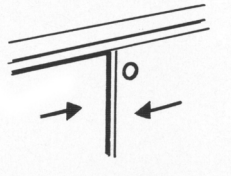
Lid Application

Lock engages strike mounted on underside of lid.



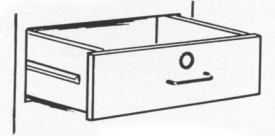
Sliding (By-Pass) Door Application

Lock engages strike mounted on rear door.

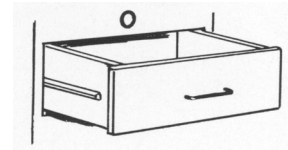


Single Drawer Application

Drawer Mounted Lock - Bolt or cam locks on frame.

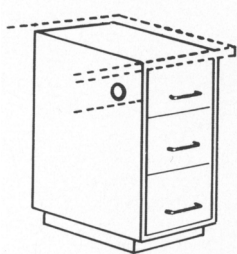


Frame Mounted Lock - Cam locks on back of drawer front with hook cam engaging strike.



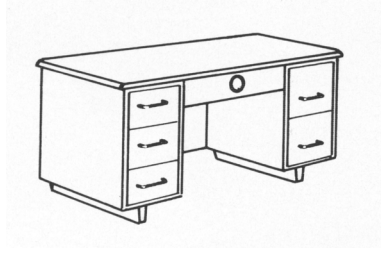
Multiple Drawer Applications (Wood)

Pedestal/File



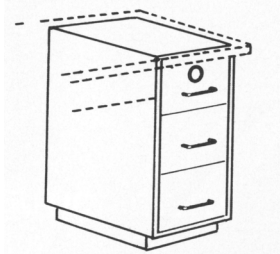
Side mounted gang lock - Vertical bar movement locks all drawers simultaneously.

Desk



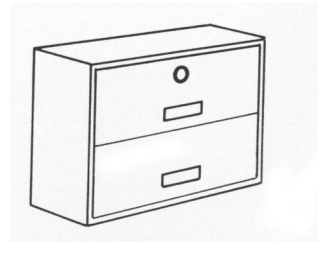
Center drawer mounted lock - bolt locks on frame or top. Side drawer mechanism(s) actuated by locked center drawer secures drawers.

Pedestal/File



Top drawer mounted lock activates side mechanism securing other drawers.

Lateral File



Top drawer mounted lock activates side mechanisms securing other drawer(s); also allows only opening one drawer at a time.

Finish Codes

Finish codes applies to exposed portions of lock and is indicated by part number suffix i.e. C8053-3 Bright Brass finish.

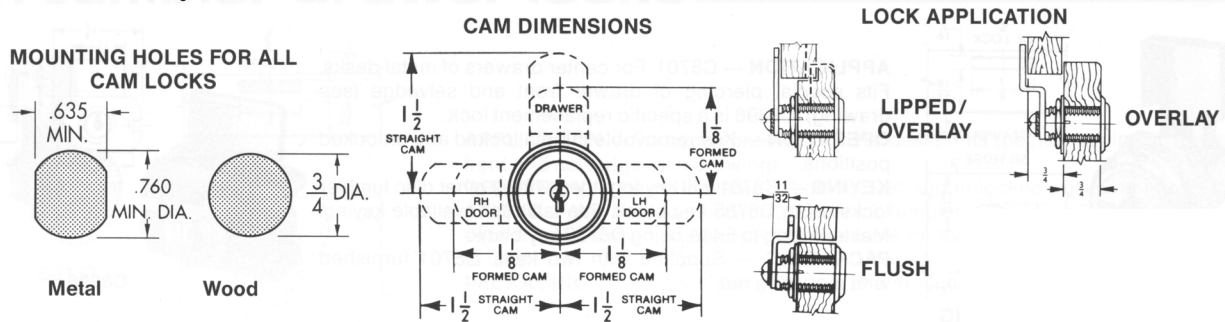
Part #	Color
2C	Zinc Plated
3	Bright Brass
4	Satin Brass
4G	Antique Brass
14A	Bright Nickel
26	Bright Chrome
26D	Dull Chrome (brushed)

Key Codes

Key codes stamping may appear with or without zeros preceding other numbers i.e. C001A and C1A are the same.

National Cabinet Locks

Disc Tumbler Cylinder Cam Locks

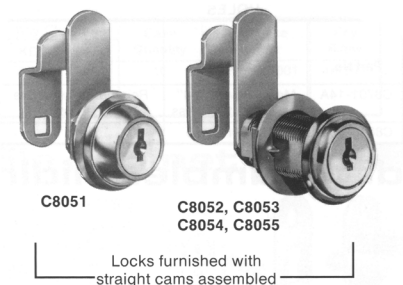


Application – for drawers, R.H. or L.H. doors with lipped overlay construction (straight cam) or flush construction (formed cam). For overlay application, the combined thickness of front and frame cannot exceed the cylinder length. Also see overlay detail at above right.

Operation – 90 degree cam turn on all locks except C8060, C8073 and C8075 which have choice of either 90 degree or 180 degree cam turn. Key removable in both locked and unlocked positions.

Keying – Will key together with all other disc tumbler locks using D8785 key blank. See table for available keying. Master keying to E41A.

Packaging – Supplied with two keys, trim washer, spur washer (for wood), mounting nut and two cams. Two stop washers included with C8060, C8073 and C8075. If flat washer (for metal) is needed, order C2015-2C separately.



Part #	Type of Mounting	Cylinder Length	Maximum Material Thickness	KA* Codes	Key KD	Changes MKKD	Case Quantity	Stocking Key Codes
NA8051-14A		7/16"	7/64"	6	200	200	25	---
NA8051-3		7/16"	7/64"	3	200	---	25	---
NA8052-14A		5/8"	15/64"	6	200	200	25	415,420
NA8052-3		5/8"	15/64"	3	200	---	25	---
NA8054-14A		15/16"	5/8"	6	200	200	25	415,413
NA8054-3		15/16"	5/8"	3	200	---	25	---
NA8054-4G	Lipped /	15/16"	5/8"	3	200	---	25	---
NA8053-14A	Overlay	1 3/16"	7/8"	6	200	200	25	415,346,390,642,420,KD, MKKD
NA8053-3	or	1 3/16"	7/8"	6	200	200	25	415,346,413,KD MKKD
NA8053-4G	Flush	1 3/16"	7/8"	6	200	200	25	415,346,390,KD
NA8055-14A		1 7/16"	1 1/8"	6	200	200	25	415,346,413,KD
NA8055-3		1 7/16"	1 1/8"	6	200	200	25	415,413
NA8055-4G		1 7/16"	1 1/8"	6	200	200	25	415
NA8060-14A		1 3/4"	1 7/16"	6	200	200	25	415,413,KD
NA8060-3		1 3/4"	1 7/16"	6	200	200	25	415,413,KD
NA8060-4G		1 3/4"	1 7/16"	6	200	200	25	415,KD
NA8073-14A		1 3/16"	7/8"	6	200	200	25	---
NA8073-3	Lipped /	1 3/16"	7/8"	6	200	200	25	346
NA8073-4G	Overlay	1 3/16"	7/8"	6	200	200	25	---
NA8075-14A	or	1 7/16"	1 1/8"	6	200	200	25	---
NA8075-3	Flush	1 7/16"	1 1/8"	6	200	200	25	---
NA8075-4G		1 7/16"	1 1/8"	6	200	200	25	---

*Key Codes used:

3 Codes – C346A, C413A and C415A

6 Codes – C346A, C413A, C415A, C420A, C642A

KD – Keyed Different

MKKD – Master Key Keyed Different

Maverick Hardware

National Cabinet Locks

Section H-2: Locks and Keys

Pin Tumbler Cylinder Locks

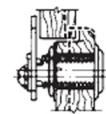
Brass Construction

Application – for drawers, R.H. or L.H. doors. C8103 and C8109 are lipped or overlay construction. For overlay application, the combined thickness of front and frame cannot exceed the cylinder length.

Operation – 90 degree cam turn, key removable in both locked and unlocked positions.

Keying – Will key together with all other disc tumbler locks using D4291 key blank. See table for available keying. Master keying to GM1.

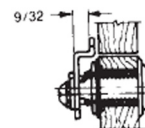
Packaging – Supplied with two keys, trim washer, spur washer (for wood), mounting nut and two cams. If flat washer (for metal) is needed, order C2018-2C separately.



LIPPED/
OVERLAY



C8101
C8103
C8109



FLUSH



C8106
C8108

Part #	Type of Mounting	Cylinder Length	Maximum Material Thickness	KA* Codes	Key KD	Changes MKKD	Case Quantity	Stocking Key Codes
NA8002-26D	Flush	1 1/16"	3/4"	4	850	650	10	915,101,KD,MKKD
NA8102-4	Flush	1 1/16"	3/4"	2	850	650	10	915
NA8103-26D	Lipped/	1 3/16"	7/8"	4	850	650	10	KD
NA8103-4	Overlay	1 3/16"	7/8"	2	850	---	10	915
NA8106-26D	Flush	1 7/16"	1 1/8"	4	850	650	10	---
NA8106-4	Flush	1 7/16"	1 1/8"	2	850	---	10	---
NA8108-26D	Flush	1 3/4"	1 3/8"	4	850	650	10	915,KD
NA8108-4	Flush	1 3/4"	1 3/8"	2	850	---	10	---
NA8109-26D	Lipped/	1 3/4"	1 1/2"	4	850	650	10	915,101,KD
NA8109-4	Overlay	1 3/4"	1 1/2"	2	850	---	10	915, KD

*Key Codes used:

2 Codes – 107 and 915

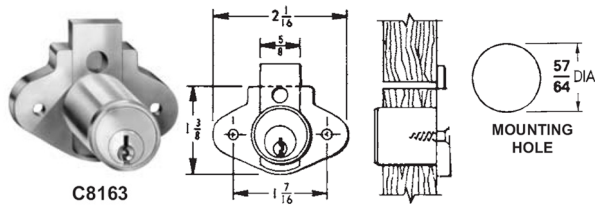
4 Codes – 101, 103, 107 and 915

KD – Keyed Different

MKKD – Master Key Keyed Different

National Cabinet Locks

Pin Tumbler Drawer Locks



C8163



C7163-2C

Extended bolt for C8163 drawer lock provides 3" extension, can be cut to required length. Packed 20 pcs. per bag.

**"The Advantage Plus"**

C8163 locks feature easy removal of cylinder from lock housing while lock remains in place. Bolt has access hole for cylinder retention screw at back of lock. U.S. Patent No. 4,899,563.

Application - For Drawers. Surface mounted. Requires 7/8" dia. hole for cylinder

Operation - Key removable in both locked and unlocked positions.

Keying - Will key together with all other pin tumbler locks using D4291 key blank. See table for available keying. Masterkeying to GM1.

Packaging - Suppling with two keys and mounting screws,

Part #	Installation	Bolt Type	Cylinder Length	Bolt Travel	KA* Codes	Key KD	Changes MKKD	Case Quantity	Key Codes
NA863-26D	Drawer	Dead	15/16"	11/32"	4	850	650	10	915
NA8163-4	Drawer	Dead	15/16"	11/32"	4	850	650	10	915

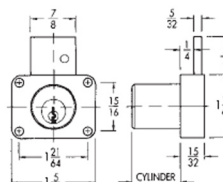
*Key Codes used: 4 codes - 101,103,107 and 915

KD: Key Different, MKKD: Master key keyed different

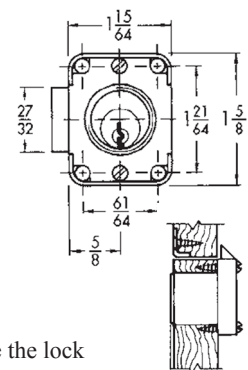
Pin Tumber Door & Drawer Locks



C8177, C8178, C8179 C8173, C8174, C8175



MOUNTING HOLE



Application - For Drawers, R.H. or L.H. doors. Surface mounted. Requires 7/8" dia. hole for cylinder

Operation - Key removable in both locked and unlocked positions except C8139

"The Advantage Plus" - The PLUS feature allows you to remove the cylinder from our pin tumbler box locks while the lock remains in place. No mounting screws need to be removed. Simply use a 5/64" allen wrench from the back to remove the cylinder and plug for re-keying.

Keying - Will key together with all other pin tumbler locks using D4291 key blank. See table for available keying. Masterkeying to GM1.

Packaging - Supplied with two keys, strike and mounting screws.

Part #	Installation	Bolt Type	Cylinder Length	Bolt Travel	KA* Codes	Key KD	Changes MKKD	Case Quantity	Key Codes
NA8173-26D	Door	Dead	7/8"	3/4"	4	850	650	10	915,101,103,KD
NA8173-4	Door	Dead	7/8"	3/4"	2	850	650	10	915,,KD
NA8173-4G	Door	Dead	7/8"	3/4"	2	850	---	10	---
NA8174-26D	Door	Dead	1 1/8"	3/4"	4	850	650	10	---
NA8175-26D	Door	Dead	1 3/8"	3/4"	4	850	650	10	---
NA8178-26D	Drawer	Dead	7/8"	3/4"	4	850	650	10	915,101,KD
NA8178-4	Drawer	Dead	7/8"	3/4"	2	850	---	10	---
NA8178-4G	Drawer	Dead	7/8"	3/4"	2	850	---	10	---
NA8139-26D*	Door	Spring	3/4"	7/32"	4	850	650	10	---
NA8177-26D	Drawer	Dead	1 1/8"	3/4"	4	850	---	10	---
NA8179-26D	Drawer	Dead	1 3/8"	3/4"	4	850	650	10	915,101,103,KD
NA8179-4	Drawer	Dead	1 3/8"	3/4"	2	850	---	10	---

*Key Codes used: 4 codes - 101,103,107 and 915

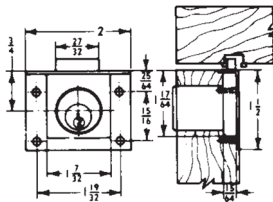
KD: Key Different, MKKD: Master key keyed different

Maverick Hardware

National Cabinet Locks



C8139



MOUNTING HOLE
Additional mortise
required for mounting.



C8131

Application - For drawers. Half mortise type requires mortise for housing and 7/8" dia. Hole for cylinder. C8139 is surface mounted.

Operation - Key removable in both locked and unlocked positions except C8131 and C8139.

Keying - Will key together with all other pijn tumbler locks using D4291 key blank.

Packaging - Supplied with two keys, strike and mounting screws. If trim ring is required, order C2017 seperately.

Stocking

Part #	Installation	Bolt Type	Cylinder Length	Bolt Travel	KA* Codes	Key KD	Changes MKKD	Case Quantity	Key Codes
NA8131-26D**	Drawer	Spring	7/8"	7/32"	4	850	650	10	---
NA8131-4**	Drawer	Spring	7/8"	7/32"	2	850	---	10	---
NA8133-26D	Drawer	Dead	7/8"	1/4"	4	850	---	10	---
NA8133-4	Drawer	Dead	7/8"	1/4"	2	850	---	10	915
NA8135-26D	Drawer	Dead	1 1/8"	1/4"	4	850	---	10	---
NA8139-26D**	Door	Spring	3/4"	7/32"	4	850	650	10	---

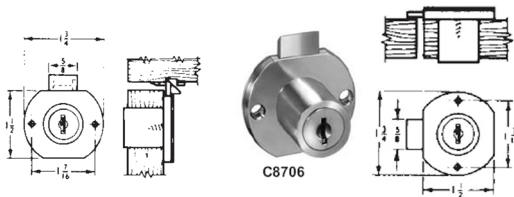
*Key Codes used: 2 codes - 107 and 915

4 codes - 101, 103, 107 and 915

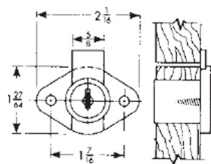
**Key removable in locked position only.

KD: Key Different, MKKD: Master key keyed different

Disc Tumbler Door & Drawer Locks



C8706



C8803

Application - For drawers and doors.

Surface mounted. Requires 7/8" diameter hole for cylinder.

Operation - Key removable in both locked and unlocked positions except C8706.

Keying - Will key together with all other disc tumbler locks using D8785 key blank. See table for available keying. Master keying to GM1.

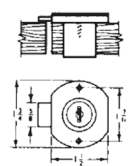
Packaging - Supplied with two keys, strike and mounting screws. C8706 furnished with strike.



C8704



C8703, C8705



Stocking

Part #	Installation	Bolt Type	Cylinder Length	Bolt Travel	KA* Codes	Key KD	Changes MKKD	Case Quantity	Key Codes
NA8703-14A	Drawer	Dead	15/16"	11/32"	6	200	200	25	415,KD
NA8703-3	Drawer	Dead	15/16"	11/32"	6	200	200	25	KD, MKKD
NA8703-4G	Drawer	Dead	15/16"	11/32"	6	200	200	25	415,KD
NA8704-14A	Door	Dead	15/16"	11/32"	6	200	200	25	415
NA8704-3	Door	Dead	15/16"	11/32"	6	200	200	25	415
NA8704-4G	Door	Dead	15/16"	11/32"	6	200	200	25	---
NA8705-14A	Drawer	Dead	1 3/16"	11/32"	3	200	200	25	---
NA8705-3	Drawer	Dead	1 3/16"	11/32"	3	200	200	25	415
NA8705-4G	Drawer	Dead	1 3/16"	11/32"	3	200	---	25	---
NA8706-3	Drawer	Spring	15/16"	9/32"	3	200	---	25	413,KD
NA8803-14A	Drawer	Dead	15/16"	11/32"	6	200	200	25	---
NA8803-3	Drawer	Dead	15/16"	11/32"	6	200	200	25	---
NA8303-4G	Drawer	Dead	15/16"	11/32"	6	200	200	25	---
NA8804-14A	Door	Dead	15/16"	11/32"	6	200	200	25	---
NA8804-3	Door	Dead	15/16"	11/32"	6	200	200	25	---
NA8804-4G	Door	Dead	15/16"	11/32"	6	200	200	25	---

*Key Codes used: 3 codes - C346A, C413A and C415A

6 codes - C346A, C390A, C413A, C415A, C420A and C642A

KD: Key Different, MKKD: Master key keyed different

National Cabinet Locks

Draw Lock
KV986KA70NP

Mounting Flange: 1 1/2" X 2" wide with screw holes on 1 7/16" centers. Barrell OD is 7/8". Bolt travel is 3/8". Available keyed alike (Key #70). Nickel plated steel, six tumblers. Sold per each, packed 12 per box.



CompX

Disc Tumbler Gang Locks

Application – For locking drawers in desk pedestals and other multiple drawer applications. Requires 7/8" dia. hole for cylinder and dado for bar, measuring 7/8" x 1/8" deep on inside of panel.

Operation – Key removable in both locked and unlocked positions. Turning the key locks all drawers simultaneously (drawers must be in closed position). Bar moves studs into notch in drawer or slide, thus preventing drawer movement.

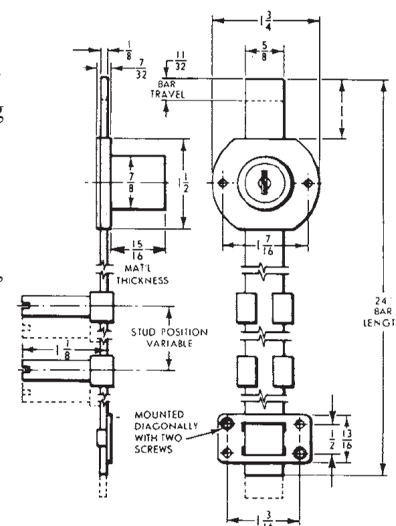
Keying – Will key together with all other disc tumbler locks using D8785 key blank. See table for available keying. Master keying to E41A.

Packaging – Supplied with two keys, three locking studs, three stud slides, saddle and mounting screws.



Additional 7/8" x 1/8" deep dado for bar required on inside of panel.

MOUNTING HOLE

**Stocking**

<u>Part #</u>	<u>Installation</u>	<u>Bar Operation</u>	<u>Cylinder Length</u>	<u>Bar Travel</u>	<u>KA* Codes</u>	<u>Key KD</u>	<u>Changes MKKD</u>	<u>Key Codes</u>
NA8090-14A	Desk Pedestals	Dead Locking	15/16"	11/32"	6	200	200	415
NA8090-3	Similar Multidrawer		15/16"	11/32"	6	200	---	415
NA8090-4G	Conditions		15/16"	11/32"	6	200	---	KD

Case quantity: 5

*Key codes used: C346A, C390A, C413A, C415A, C420A, and C642A.

KD: Keyed Different

MKKD: Master Key Keyed Different

D8090

Cylinder is located near top of pedestal.

Saddle reverses for mortise application.

Maverick Hardware

National Cabinet Locks

Disc Tumbler Sliding Door Locks

Application – For wood sliding doors. Requires a 7/8" dia. hole in front door for cylinder.

Operation – C8042: Push in cylinder, key turn engages bolt behind strike. C8043: Pushing in cylinder locks doors. Key removable in both locked and unlocked positions.

Keying – Will key together with all other disc tumbler locks using D8785 key blank. See table for keying.

Packaging – Supplied with two keys, strike and mounting screws.

Stocking

Part #	Installation	Bolt Type	Cylinder Length	Bolt Travel	KA* Codes	Key KD	Changes MKKD	Case Quantity	Key Codes
NA8042-26D	Sliding Doors	90 degree turn hook	7/8"	7/16"	3	200	---	10	413 KD
NA8043-26D	Sliding Doors	Plunger	1"	7/16"	6	200	200	10	415 KD
NA8043-3	Sliding Doors	Plunger	1"	7/16"	6	200	---	10	---
NA8043-14A	Sliding Doors	Plunger	1"	7/16"	6	200	---	10	---

*Key Codes Used: 1Code – C415A

3 Codes – C346A, C413A, and C415A

6 Codes – C346A, 390A, C413A, C415A, and C642A.

KD: Key Different

MKKD: Master Key Keyed Different



Pin Tumbler Sliding Door, File Cabinet Locks

Application – C8140 is for sliding glass doors. C8142 and in front door for cylinder. C8150 is used internally on filing cabinets to gang lock drawers.

Operation – C8140 AND C8150: key removable in locked position only. C8142 and C8143: key removable in both locked and unlocked positions.

Keying – Will key together with all other pin tumbler locks using D4291 key blank. See table for available keying. Master keying to GM1.

Packaging – supplied with two keys. C8142 and C8143 furnished with strike and mounting screws.

Part #	Installation	Bolt Type	Cylinder Length	Bolt Travel	KA* Codes	Key KD	Changes MKKD	Case Quantity	Stocking Key Codes
NA8142-26D	Sliding Doors	90 degree turn hook	7/8"	7/16"	3	200	---	10	413 KD
NA8143-26D	Sliding Doors	Plunger	1"	7/16"	6	200	200	10	415 KD
NA8143-3	Sliding Doors	Plunger	1"	7/16"	6	200	---	10	---
NA8143-14A	Sliding Doors	Plunger	1"	7/16"	6	200	---	10	---

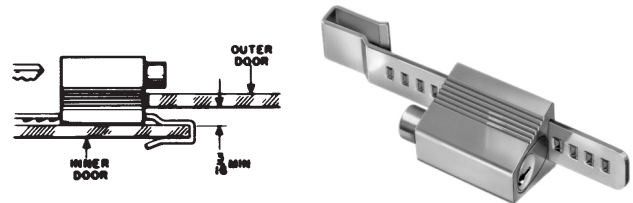
*Key Codes Used: 1Code – C415A

3 Codes – C346A, C413A, and C415A

6 Codes – C346A, 390A, C413A, C415A, and C642A.

KD: Key Different

MKKD: Master Key Keyed Different



KV Locks

Plunger Locks**KV984KA90NP Nickel**

Plunger lock for doors up to 1" thick. Mounting flange is 7/8" wide x 2" long with screw holes on 1 1/2" centers. Keyed alike only, key #90. Barrel: 7/8" O.D. Plunger travel: 15/32". Plunger receptacle: 1/2" O.D. x 7/16" O.A. Sold per each, 12 per box.

**Glass Door Ratchet Lock****KV962KA440CHR Keyed Alike Only**

Similar to KV963 but with thumbscrew adjustment to fit any door up to 3/4" thick. Polished chrome look. Sold per each, 12 per carton. Keyed alike, key #440.

**Glass Door Ratchet Lock****KV963KA440CHR Keyed Alike Only**

Ratchet lock for 1/4" glass. Adjustable 3/4" to 3 3/8". Polished chrome look. Sold per each, 12 per carton. Keyed alike, key #440.

**Glass Door Ratchet Lock****KV965KA50NP Keyed Alike Only**

Adjustable lock for all 1/4" glass sliding doors. Disc tumbler. Adjustable 1" to 3 1/8". Polished nickel finish. Sold per each, 12 per carton. Keyed alike, key #50.



Section H-2: Locks and Keys

Chest/Lid Locks

Packaging – Supplied with on key. Appropriate strikes and mounting screws supplied with locks with additional keyhole escutcheon furnished with C8384.

C8414

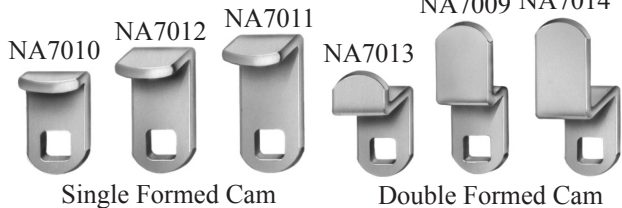
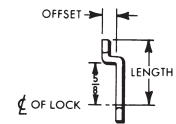
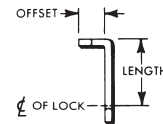
C2016

10

National Cabinet Locks

Disc Tumbler Cams

Part #	Description	Length	Qty. per Bag	Stocking
NA7001-2C	Straight Cam	3/4"	25	N
NA7002-2C	Straight Cam	1"	25	N
NA7003-2C	Straight Cam	1-1/8"	25	N
NA7004-2C	Straight Cam	2"	25	N
NA7005-2C	Straight Cam	3"	25	Y
NA7006-2C	Straight Hook Cam	1"	25	N
NA7007-2C	Straight Hook Cam	1-1/8"	25	Y



Single Formed Cam

Double Formed Cam

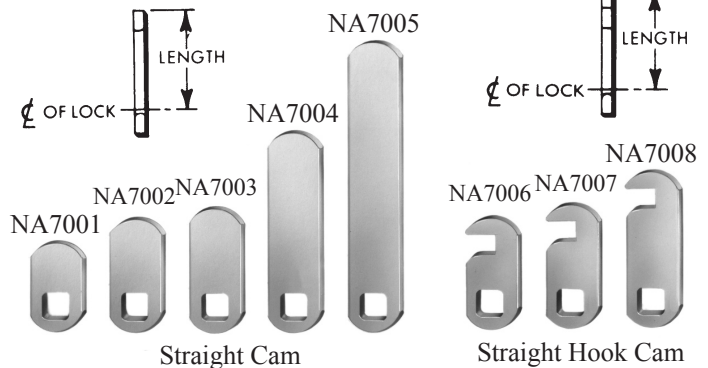
Part #	Description	Length	Offset	Qty per Bag	Stocking
NA7008-2C	Straight Hook Cam	1-1/2"	---	25	Y
NA7009-2C	Double Formed Cam	1-3/4"	1/2"	25	Y
NA7010-2C	Single Formed Cam	5/8"	7/32"	25	N
NA7011-2C	Single Formed Cam	1-1/8"	7/16"	25	N
NA7012-2C	Single Formed Cam	1"	7/16"	25	N
NA7013-2C	Double Formed Cam	1-1/8"	3/8"	25	N
NA7014-2C	Double Formed Cam*	1-5/8"	5/16"	25	Y

*For overlay construction using 3/4" thick front and 3/4" thick frame material. Use with C8053 disc tumbler lock.

NA7112 NA7115 NA7114



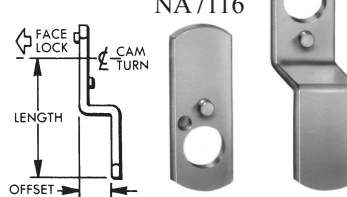
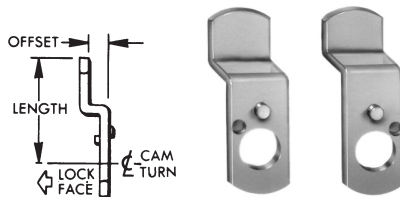
Double Formed Cams



Straight Cam

Straight Hook Cam

NA7110 NA7111



NA7104

NA7105

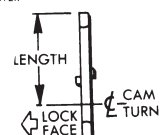
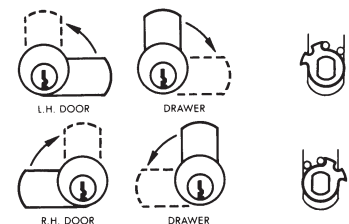
NA7103 NA7102



Straight Cams

Pin Tumbler Cams

Part #	Description	Length	Offset	Qty. Per Bag	Stocking
NA7101-2C	Straight Cam	1-1/4"	---	20	Y
NA7104-2C	Straight Cam	3"	---	20	Y
NA7110-2C	Double Formed Cam	1-1/4"	9/32"	20	N
NA7115-2C	Double Formed Cam*	1-5/8"	7/16"	20	N
NA7102-2C	Straight Cam	1-1/4"	---	20	Y
NA7103-2C	Straight Cam	1-1/8"	---	20	N
NA7105-2C	Straight Cam	3"	---	20	Y
NA7111-2C	Double Formed Cam	1-1/4"	9/32"	20	N
NA7112-2C	Double Formed Cam	1-1/8"	1/4"	20	N
NA7114-2C	Double Formed Cam*	1-5/8"	7/16"	20	N
NA7113-2C	Double Formed Cam*	1-5/8"	7/16"	20	N
NA7116-2C	Double Formed Cam*	1-5/8"	7/16"	20	N



*For overlay construction using 3/4" thick front and 3/4" thick frame material. Use with either C8102 or C8112 pin tumbler lock.

Maverick Hardware

Keys

Original Master Keys

<u>Part #</u>	<u>Description</u>	<u>Material</u>	<u>Part #</u>
NA4299	Pin Tumbler GM1 Master Key	Brass	NAGM2
NA8419	Lever Tumbler 5LM Flat Master Key	Steel	N5
NA8799	Disc Tumbler E41A Master Key	Brass	NAE41A
NA8999	Disc Tumbler E13A Master Key	Brass	N5

* NS: Non Stock



D4299



D8419