

Section I-1: EPCO Tubing & Closet Hardware

Section I-1: EPCO Tubing & Closet Hardware

# EPCO Tubing & Closet Hardware

# Maverick Hardware

## Round Tubing & Closet Hardware

Section I-1: EPCO Tubing & Closet Hardware

### Round Closet Tubing (890)

- Polished chrome plated steel
- Outside diameter 1 1/6"
- Wall thickness 14 gauge
- Flanges: 850, 860, 852

<u>Part#</u>	<u>Length</u>
EP890-04-CR	4'
EP890-05-CR	5'
EP890-06-CR	6'
EP890-08-CR	8'
EP890-10-CR	10'
EP890-12-CR	12'



### Open Closet Flange (850)

- Open flange for 1" and 1 1/16"
- Zinc

<u>Part#</u>	<u>Finish</u>
EP850-CR	Chrome



### Closed Round Closet Flange (860)

- Closed flange for 1" and 1 1/16" tubing
- Zinc

<u>Part #</u>	<u>Finish</u>
EP860-CR	Chrome



### Open Closet Flange (852)

- Open flange for 1" and 1 1/16" tubing
- 32mm closet system flange with 5mm pins
- Zinc

<u>Part#</u>	<u>Finish</u>
EP852-CR	Chrome



### Utility Hooks

Sturdy utility hook for commercial use. Screws included. Anochrome finish. Sold per each, 12 per box.

<u>Part #</u>	<u>Length</u>
KV1132-3	3"
KV1132-4	4"
KV1132-6	6"
KV1132-10	10"



### 760 Tubing Center Support

- 24" Length, can be cut to size
- 1 1/16" OD Tubing
- 12 per box with screws

<u>Part #</u>	<u>Finish</u>
KV760	Anochrome



### Plastic Pole Sockets

BA1323-WH

Rugged molded plastic socket to fit standard 1 3/8" rods. Includes end socket and U socket. Plastic construction. White finish. Sold per pair, 100 pair per case.



## Round Tubing & Closet Hardware

### Round Closet Tubing (895)

- Polished chrome plated steel
- Outside diameter 1 5/16"
- Wall thickness 14 gauge
- Flanges: 851, 861



<u>Part#</u>	<u>Length</u>	<u>Finish</u>
EP895-06-CR	6'	Chrome
EP895-08-CR	8'	Chrome
EP895-08-ORB	8'	Oil Rubbed Bronze
EP895-08-SN	8'	Satin Nickel
EP895-10-CR	10'	Chrome
EP895-12-CR	12'	Chrome

### Open Closet Flange (851)

- Open flange for 1 1/4" and 1 5/16"
- Zinc



<u>Part#</u>	<u>Finish</u>
EP851-CR	Chrome
EP851-ORB	Oil Rubbed Bronze
EP851-SN	Satin Nickel

#### With 5mm Pin

<u>Part #</u>	<u>Finish</u>
EP83351-CR	Chrome
EP83351-ORB	Oil Rubbed Bronze
EP83351-SN	Satin Nickel

### Closed Round Closet Flange (861)

- Closed Flange for 1 1/4" and 1 5/16"
- Zinc



<u>Part #</u>	<u>Finish</u>
EP861-CR	Chrome
EP861-ORB	Oil Rubbed Bronze
EP861-SN	Satin Nickel

#### With 5mm Pin

<u>Part #</u>	<u>Finish</u>
EP83311-CR	Chrome
EP83311-ORB	Oil Rubbed Bronze
EP83311-SN	Satin Nickel

### Shelf and Pole Bracket

Uses 1 5/16" diameter maximum pole size. Overall length, 12 5/8" to front pole socket. Accepts an 11" wide shelf. Approximately 2 7/8" drop from bottom of shelf to pole. 13 gauge steel construction with enamel finish. Screws included. Sold per each, 10 per box.



1194



1195



<u>Part #</u>	<u>Finish</u>
KV1194WH	White
KV1195WH	White

### Shelf and Rod Bracket

- Solid stainless steel construction

<u>Part #</u>	<u>Finish</u>
EP858-PC	Polished Chrome
EP858-ORB	Oiled Rubbed Bronze



# Maverick Hardware

## Oval Tubing & Closet Hardware

### Oval Closet Tubing (830)

- 15mm x 30mm
- Polished Chrome Plated Steel
- 8' and 12' lengths
- Wall thickness: 1 mm
- Height: 30mm
- Width: 15mm
- Flanges: 840, 841, 842

<u>Part #</u>	<u>Length</u>	<u>Finish</u>
EP830-08-CR	8'	Chrome
EP830-08-ORB	8'	Oil Rubbed Bronze
EP830-08-SN	8'	Satin Nickel
EP830-12-CR	12'	Chrome



### Oval Closet Flange (840)

- Bright chrome plated flange for oval tubing
- No mounting pins

<u>Part#</u>	<u>Finish</u>
EP840-CR	Chrome
EP840-ORB	Oil Rubbed Bronze
EP840-SN	Satin Nickel



### Oval Closet Flange (841)

- Bright chrome plated flange for oval tubing
- Two 5mm mounting pins, 32mm CC
- Zinc

<u>Part #</u>	<u>Finish</u>
EP841-CR	Chrome
EP841-ORB	Oil Rubbed Bronze
EP841-SN	Satin Nickel



### Oval Center Support (842)

- Bright chrome plated center support for oval tubing
- 32mm hole centers
- Zinc

<u>Part #</u>	<u>Finish</u>
EP842-CR	Chrome



### Shelf and Rod Bracket

- Solid stainless steel construction

<u>Part #</u>	<u>Finish</u>
EP848-PC	Polished Chrome
EP848-ORB	Oiled Rubbed Bronze



Glides and Levelers

**Non-Handed Rail Bracket**

**PT802-01-V1**

Universal mount: left or right.

**Features**

- 130 lbs weight capacity
- Type – closet/cabinet bracket
- Finish – white



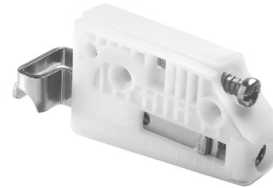
**Hanging Bracket, Dowel Mount Right**

**PT806-22-DX**

Includes white cover caps

**Features**

- 130 lbs weight capacity
- Size – 10mm dowel mount
- Type – hanging brackets, dowel mount
- Finish – white



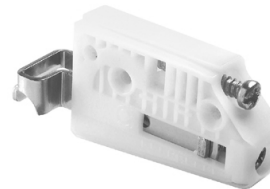
**Hanging Bracket, Dowel Mount Left**

**PT806-22-SX**

Includes white cover caps

**Features**

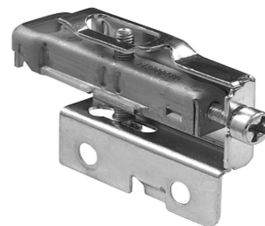
- 130 lbs weight capacity
- Size – 10mm dowel mount
- Type – hanging brackets, dowel mount
- Finish – white



**Suspension Bracket**

**Features**

- All metal
- 286lbs. carrying capacity per wall cabinet



*The star in your cabinet*

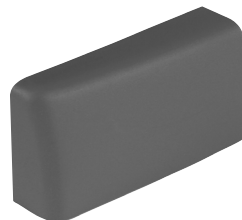
<u>Part #</u>	<u>Mount</u>
GR499.825.40.1215	Left
GR499.825.40.1115	Right

**Suspension Bracket Cover Cap**

#

White plastic Cover Cap to us with Grass' Suspension Bracket.

*\*Other colors available by special order*



*The star in your cabinet*

<u>Part #</u>	<u>Mount</u>
GR514.825.40.1274	Left
GR514.825.40.1174	Right

# Maverick Hardware

## Closet Storage Aids

### Suspension Rail

#### MEHR8

Grass' new Patent Pending Suspension Rail will make quick work of any installation. the unique hole pattern allows the installer to quickly locate all of the stud locations.

#### Features

- Self-centering Suspension Rail - 16" center to center
- Hole pattern repeats itself for a quick installment
- Steel
- 8' long

**G\* GRASS**

*The star in your cabinet*

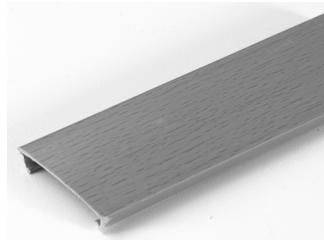


### Suspension Rail Cover

#### MEHRC

White plastic rail cover to use with Grass' Patent Pending Suspension Rail.

*\*Other colors available by special order*



**G\* GRASS**

*The star in your cabinet*

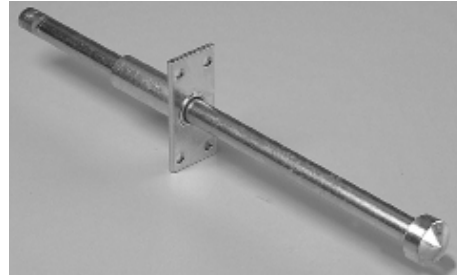
## Closet Storage Aids

### Extension Hang Rod

**KV753**

**Features**

- Anochrome Finish
- 0.43" Diameter Rod; Extends 5/8" to 8 1/4"



### Clothing Carrier

Mounts under closet shelves, greatly increasing capacity, and making garments more accessible

- 12": Fits 12" to 16" Shelves
- 16": Fits 16" to 20" Shelves
- 20": Fits 20" to 24" Shelves



<u>Part #</u>	<u>Travel</u>	<u>Finish</u>
KVKV112	12"	Anochrome
KVKV116	16"	Anochrome
KVKV120	20"	Anochrome



### Three-Bar Towel Bar

**KV793**

**Features**

- Side mounts to either left or right hand side of the cabinet
- Rack mounts with four screws
- Anochrome finish
- 18" Long x 5" Wide



### Extension Closet Rods

**KVKV2**

Zinc Finish.



<u>Part #</u>	<u>Length</u>
KVKV2ZC18	18" - 30"
KVKV2ZC30	30" - 48"
KVKV2ZC48	48" - 72"
KVKV2ZC60	60" - 96"

